





# 5d Stewart House, Chandlers Ford, SO53 5RW

£180,000

A particularly spacious top floor duplex apartment offered For Sale with no forward chain and situated in the popular Hiltingbury area, within walking distance to local shops and amenities. The property affords generous well proportioned rooms with large windows affording a light and airy feel. Bedroom 2 benefits from a balcony with far reaching views to the south and school catchments include Hiltingbury Infant and Hiltingbury Junior School and Thornden Secondary School.

## ACCOMMODATION

### Ground Floor

#### Entrance Hall:

Storage cupboard.

#### Living Room:

14'5" x 13'8" (4.39 x 4.17)

Picture window to the south side, stairs to first floor.

#### Kitchen:

11'4" x 10'8" (3.45 x 3.25)

Range of units, space and plumbing for appliances.

### First Floor

#### Landing:

Airing cupboard.

#### Bedroom 1:

14'4" x 13'2" (4.37 x 4.01)

Picture window.

#### Bedroom 2:

14'4" x 10'0" (4.37 x 3.05)

Picture window and door to balcony on the south side.

#### Bathroom:

White suite comprising bath with mixer tap and shower attachment, wash hand basin, WC.

## OUTSIDE

### Communal Garden:

Communal garden area

### Parking:

Resident and visitors parking available

## OTHER INFORMATION

### Tenure:

Leasehold

### Term of Lease:

999 years from 1971

### Maintenance Charge:

Approximately £110.50 per month

### Ground Rent:

Approximately £20.00 per annum

### Approximate Age:

1970's

### Approximate Area:

71sqm/764sqft (Details taken from EPC)

### Sellers Position:

No forward chain

### Heating:

None

### Windows:

UPVC double glazing

### Infant/Junior School:

Hiltingbury Infant School/Hiltingbury Junior School

### Secondary School:

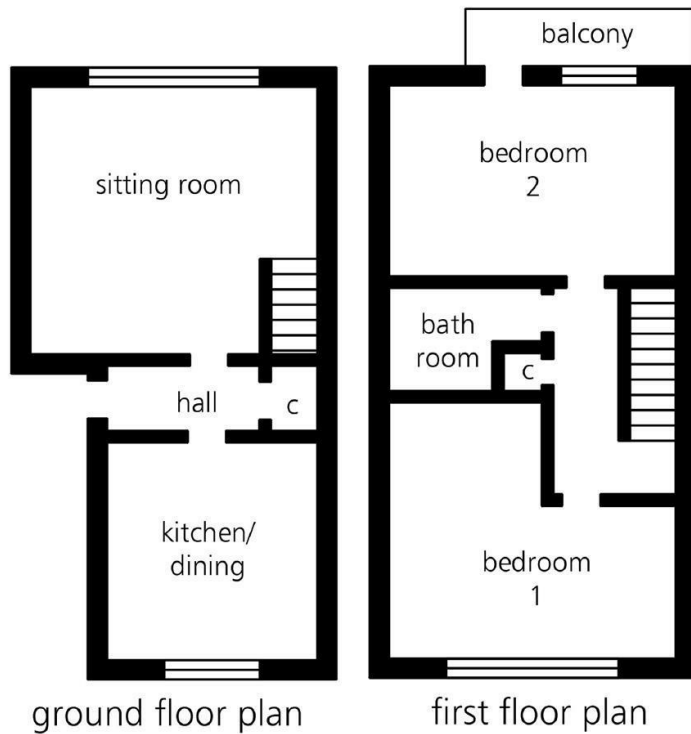
Thornden Secondary School

### Council Tax:

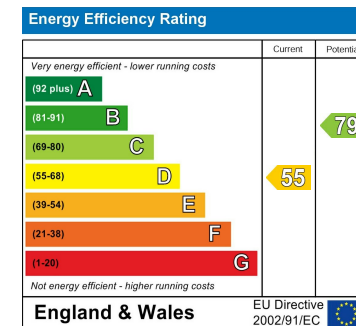
Band B

### Local Council:

Eastleigh Borough Council 02380 688000



illustrative purposes only



94 Winchester Road, Chandler's Ford, Hampshire, SO53 2GJ

Sales: t: 02380 255333 e: [property@sparksellison.co.uk](mailto:property@sparksellison.co.uk)

Lettings: t: 02380 018518 e: [lettings@sparksellison.co.uk](mailto:lettings@sparksellison.co.uk)



While we endeavour to make our sales particulars fair, accurate and reliable, they are only a general guide to the property and, accordingly, if there is any point which is of particular importance to you please contact the office and we will be pleased to check it for you, especially if you are contemplating travelling some distance to view the property. These approximate room sizes are only intended as general guidance. You must verify the dimensions carefully before ordering carpets or any built in furniture. Please note we have not tested the services or any of the equipment or appliances in this property, accordingly we strongly advise prospective buyers to commission their own survey or service report before finalising their offer to purchase. These particulars are issued in good faith but do not constitute representations of fact or form part of any offer or contract. The matters referred to in these particulars should be independently verified by prospective buyers or tenants. Neither Sparks Ellison nor any of its employees or agents has any authority to make or give any representation or warranty whatever in relation to this property. Your home is at risk if you do not keep up repayments on a mortgage or other loan secured on it. Written quotations available on request. All loans secured on property. Life assurance usually required.

