



10 Sarum Road, Chandler's Ford, SO53 2AN

£500,000

A magnificent three bedroom detached bungalow conveniently situated on the edge of Peverells Wood and within walking distance to the centre of Chandlers Ford and all its amenities together with bus services to Southampton, Winchester and Eastleigh. The property has been extended to the rear to provide substantial accommodation with the stand out feature being the open plan kitchen/dining space leading onto a wonderful garden room with glass vaulted roof overlooking the rear garden. In addition to this is a spacious lounge, main bedroom with en-suite bathroom, two further bedrooms and a further shower room. There is a resin bonded driveway that leads alongside the property providing off street parking, with a rear garden providing a delightful southerly aspect measuring approximately 61' in length with a good size shed and summer house. The property is also offered for sale with no forward chain.

ACCOMMODATION

Reception Hall:

21'3" (6.48m) Hatch to loft space, storage cupboard, light tunnel.

Sitting Room:

15' x 13'8" (4.57m x 4.17m) Bay window.

Kitchen:

13'4" x 9'4" (4.06m x 2.84m) Re-fitted range of shaker style units, electric oven, electric hob with extractor hood over, space and plumbing for further appliances, open plan to dining area.

Dining Area:

12'8" x 8'2" (3.86m x 2.49m) Double doors to garden room.

Garden Room:

12'8" x 10'10" (3.86m x 3.30m) Vaulted glass roof, double doors to rear garden, radiator.

Bedroom 1:

11'1" x 11' (3.38m x 3.35m)

En-Suite Bathroom:

9'3" x 5'2" (2.82m x 1.57m) Modern white suite comprising full width walk in shower with glazed screen, bath, wash basin, wc, tiled floor.

Bedroom 2:

11'5" x 8'10" (3.48m x 2.69m) Measurement up to range of wall to wall fitted wardrobes.

Bedroom 3:

10' x 9'5" (3.05m x 2.87m)

Shower Room:

9'6" x 3' (2.90m x 0.91m) Modern white suite with chrome fittings comprising shower cubicle with glazed screen, wash basin, wc.

Lobby:

Space for appliances, door to outside.

OUTSIDE

Front:

To the front of the driveway is a resin bonded driveway affording off street parking with

double gates leading to a further area of driveway and rear garden, adjacent gravelled area and planted borders.

Rear Garden:

Approximately 61' in length and a particularly attractive feature of the property enjoying a pleasant southerly aspect,. A patio adjoins the property leading onto a lawned area enclosed by fencing, summer house, garden shed with power.

OTHER INFORMATION

Tenure:

Freehold

Approximate Age:

1960's

Approximate Area:

1197sqft/111.2sqm

Sellers Position:

No forward chain

Heating:

Gas central heating

Windows:

UPVC double glazed windows

Loft Space:

Ladder connected and light, boiler

Infant/Junior School:

Scantabout Primary School

Secondary School:

Thornden Secondary School

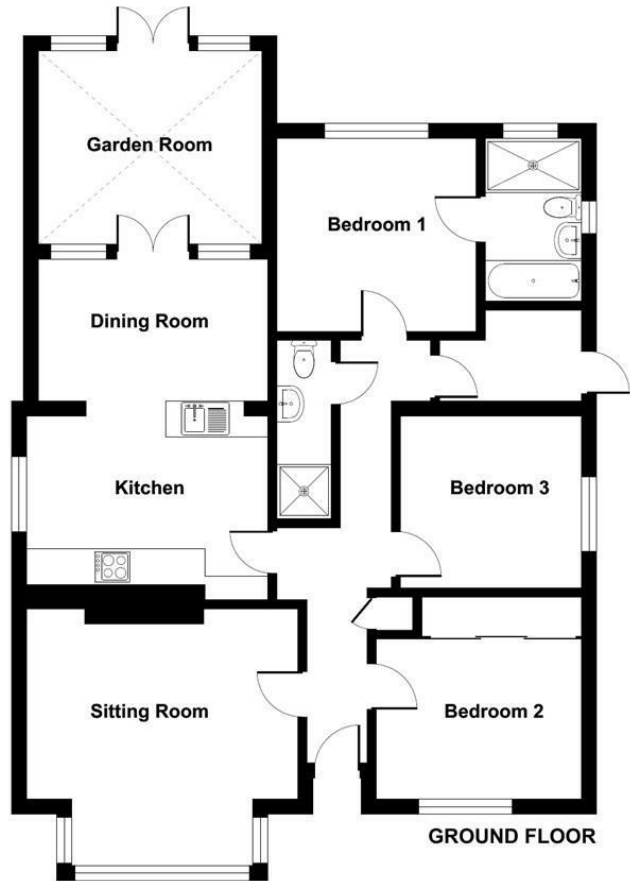
Local Council:

Eastleigh Borough Council - 02380 688000

Council Tax:

Band D

Ground Floor = 1197 sq ft / 111.2 sq m
For identification only - Not to scale



Energy Efficiency Rating		
	Current	Potential
Very energy efficient - lower running costs		
(92 plus) A		
(81-91) B		
(69-80) C		
(55-68) D		
(39-54) E		
(21-38) F		
(1-20) G		
Not energy efficient - higher running costs		
England & Wales	72	85
	EU Directive 2002/91/EC	

Floor plan produced in accordance with RICS Property Measurement Standards incorporating International Property Measurement Standards (IPMS2 Residential). © richiecom 2023. Produced for Sparks Ellison. REF: 1053735

94 Winchester Road, Chandler's Ford, Hampshire, SO53 2GJ

Sales: t: 02380 255333 e: property@sparksellison.co.uk

Lettings: t: 02380 018518 e: lettings@sparksellison.co.uk



While we endeavour to make our sales particulars fair, accurate and reliable, they are only a general guide to the property and, accordingly, if there is any point which is of particular importance to you please contact the office and we will be pleased to check it for you, especially if you are contemplating travelling some distance to view the property. These approximate room sizes are only intended as general guidance. You must verify the dimensions carefully before ordering carpets or any built in furniture. Please note we have not tested the services or any of the equipment or appliances in this property, accordingly we strongly advise prospective buyers to commission their own survey or service report before finalising their offer to purchase. These particulars are issued in good faith but do not constitute representations of fact or form part of any offer or contract. The matters referred to in these particulars should be independently verified by prospective buyers or tenants. Neither Sparks Ellison nor any of its employees or agents has any authority to make or give any representation or warranty whatever in relation to this property. Your home is at risk if you do not keep up repayments on a mortgage or other loan secured on it. Written quotations available on request. All loans secured on property. Life assurance usually required.

