



1 Tomkyns Close, Chandler's Ford, SO53 4HL

£450,000

A modern three bedroom detached family home situated in a pleasant cul de sac location within the popular Knightwood Park development. The ground floor offers two reception rooms along with a kitchen whilst, on the first floor, the master bedroom boasts an en suite shower room. Externally there is a driveway leading to the garage and an enclosed rear garden. Knightwood Park is blessed with an array of amenities including shops, health practices, public house, schooling and Knightwood Leisure Centre. Tomkyns Close also sits within catchment for Thornden School.

ACCOMMODATION

GROUND FLOOR

Entrance Hall:

Cloakroom:

5'1" x 2'8" (1.54m x 0.81m) White suite with chrome fittings comprising low level wc, wash hand basin.

Sitting Room:

15'9" x 10'1" (4.80m x 3.07m) Doors to rear garden.

Dining Room:

9'10" x 8'4" (3m x 2.53m)

Kitchen:

12'9" x 7'2" (3.89m x 2.17m) plus further recess. Built in double oven, fitted induction hob and fitted extractor hood, space and plumbing for washing machine, space and plumbing for dishwasher, built in wine fridge built in larder cupboard.

FIRST FLOOR

Landing:

Bedroom 1:

12'10" x 8'9" (3.91m x 2.66m)

En-Suite:

6'9" x 4'1" (2.05m x 1.24m) White suite with chrome fittings comprising shower in cubicle, wash hand basin, low level wc.

Bedroom 2:

10'1" x 9'1" (3.07m x 2.76m) Built in airing cupboard housing hot water tank, access to loft space.

Bedroom 3:

7'1" x 6'5" (2.15m x 1.95m)

Bathroom:

6'9" x 5'6" (2.05m x 1.68m) White suite with chrome fittings comprising bath with shower over, wash hand basin, low level wc.

Front:

Area laid to lawn, variety of plants and shrubs, pathway to front door, side pedestrian access to rear garden, driveway providing off road parking.

Rear Garden:

Measures approximately 34' x 28", area laid to lawn, area laid to timber decking, paved patio area, outside tap.

Garage:

19'11" x 9'9" (6.07m x 2.98m) Up and over door, power and light and courtesy door to rear garden.

OTHER INFORMATION

Tenure:

Freehold

Approximate Age:

1999

Approximate Area:

882sqft/81.9sqm

Sellers Position:

Looking for forward purchase

Heating:

Gas central heating

Windows:

UPVC double glazed windows

Loft Space:

Partially boarded with ladder connected

Infant/Junior School:

Knightwood Primary School

Secondary School:

Thornden Secondary School

Local Council:

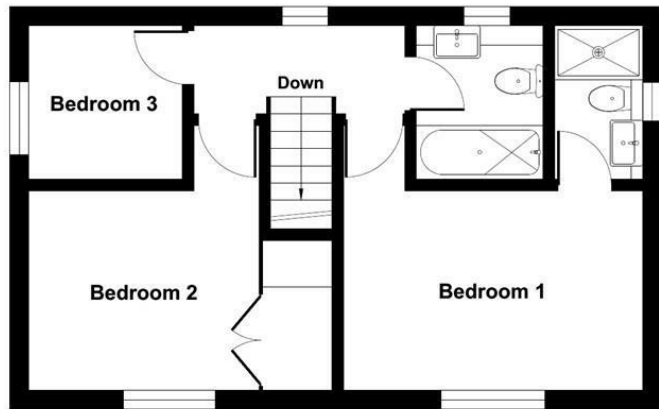
Test Valley Borough Council ~ 01264 368000

Council Tax:

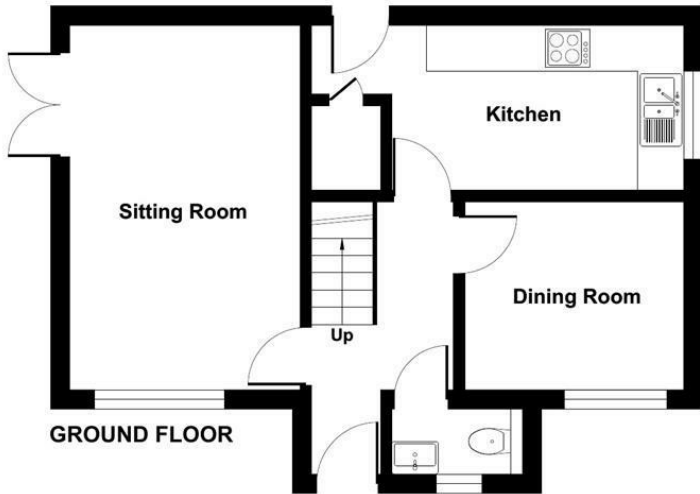
Band D



Ground Floor = 460 sq ft / 42.7 sq m
 First Floor = 422 sq ft / 39.2 sq m
 Total = 882 sq ft / 81.9 sq m
 For identification only - Not to scale



FIRST FLOOR



GROUND FLOOR

Floor plan produced in accordance with RICS Property Measurement Standards incorporating International Property Measurement Standards (IPMS2 Residential). © ricshecom 2024. Produced for Sparks Ellison. REF: 1069281



Energy Efficiency Rating		
	Current	Potential
Very energy efficient - lower running costs		
(92 plus) A		
(81-91) B		86
(69-80) C	68	
(55-68) D		
(39-54) E		
(21-38) F		
(1-20) G		
Not energy efficient - higher running costs		
England & Wales	EU Directive 2002/91/EC	

94 Winchester Road, Chandler's Ford, Hampshire, SO53 2GJ

Sales: t: 02380 255333 e: property@sparksellison.co.uk

Lettings: t: 02380 018518 e: lettings@sparksellison.co.uk

While we endeavour to make our sales particulars fair, accurate and reliable, they are only a general guide to the property and, accordingly, if there is any point which is of particular importance to you please contact the office and we will be pleased to check it for you, especially if you are contemplating travelling some distance to view the property. These approximate room sizes are only intended as general guidance. You must verify the dimensions carefully before ordering carpets or any built in furniture. Please note we have not tested the services or any of the equipment or appliances in this property, accordingly we strongly advise prospective buyers to commission their own survey or service report before finalising their offer to purchase. These particulars are issued in good faith but do not constitute representations of fact or form part of any offer or contract. The matters referred to in these particulars should be independently verified by prospective buyers or tenants. Neither Sparks Ellison nor any of its employees or agents has any authority to make or give any representation or warranty whatever in relation to this property. Your home is at risk if you do not keep up repayments on a mortgage or other loan secured on it. Written quotations available on request. All loans secured on property. Life assurance usually required.



