



sparks ellison

1 Howard Close, Chandler's Ford, SO53 3AD

£450,000

A wonderful detached bungalow situated in a pleasant cul de sac location towards the southern end of Chandler's Ford with easy access to the M3 and M27 Motorways along with Eastleigh Town centre, Southampton Parkway Train Station and the leisure centre. The property enjoys three good size bedrooms, a bright and airy sitting room, kitchen/dining room and conservatory. Externally, attractive gardens surround the property and there is the additional benefit of a driveway and garage.

ACCOMMODATION

Entrance Vestibule:

Sitting Room:

18'6" x 11'6" (5.64m x 3.51m) Fitted gas fire.

Inner Hallway:

Access to loft space.

Kitchen/Dining Room:

15'8" x 11'5" (4.78m x 3.48m) Built in double oven, built in gas hob, integrated extractor hood, integrated fridge, integrated freezer, space for table and chairs, boiler in cupboard.

Conservatory:

13'6" x 8'3" (4.11m x 2.51m) Space and plumbing for washing machine.

Shower Room:

7'2" x 5'11" (2.18m x 1.80m) Comprising shower in cubicle, wash hand basin with cupboard under.

WC:

5'11" x 2'5" (1.80m x 0.74m) WC.

Bedroom 1:

13'1" x 11'7" (3.99m x 3.53m) Range of fitted furniture incorporating hanging and cupboard space.

Bedroom 2:

11'5" x 10'5" (3.48m x 3.18m) Fitted wardrobe.

Bedroom 3:

11'5" x 7'10" (3.48m x 2.39m)

OUTSIDE

Front:

Paved pathway to front door, planted beds.

Right Hand Side:

Area laid to lawn, variety of mature plants, bushes and shrubs, paved patio area,

Left Hand Side:

Paved pathways, planted beds, green house.

Garage:

22' x 10'2" (6.71m x 3.10m) Measured at mid point with electric roller door, power and light, door to garden and driveway providing off road parking to fore.

OTHER INFORMATION

Tenure:

Freehold

Approximate Age:

1950's

Approximate Area:

1111sqft/103.2sqm

Sellers Position:

Looking for forward purchase

Heating:

Gas central heating

Windows:

UPVC double glazed windows

Loft Space:

Partially boarded with ladder and light connected

Infant/Junior School:

Fryern Infant/Junior School

Secondary School:

Toynbee Secondary School

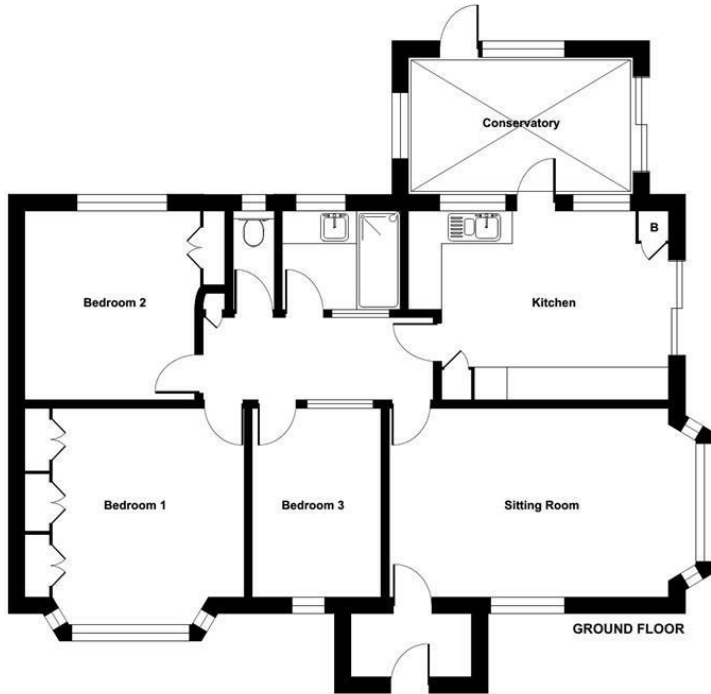
Council Tax:

Band D

Local Council:

Eastleigh Borough Council - 02380 688000

Ground Floor = 1111 sq ft / 103.2 sq m
For identification only - Not to scale



Energy Efficiency Rating		
	Current	Potential
Very energy efficient - lower running costs		
(92 plus) A		
(81-91) B		
(69-80) C		74
(55-68) D	57	
(39-54) E		
(21-38) F		
(1-20) G		
Not energy efficient - higher running costs		
England & Wales	EU Directive 2002/91/EC	

Floor plan produced in accordance with RICS Property Measurement Standards incorporating International Property Measurement Standards (IPMS2 Residential). © richiecom 2024. Produced for Sparks Ellison. REF: 1079630

94 Winchester Road, Chandler's Ford, Hampshire, SO53 2GJ

Sales: t: 02380 255333 e: property@sparksellison.co.uk
Lettings: t: 02380 018518 e: lettings@sparksellison.co.uk



While we endeavour to make our sales particulars fair, accurate and reliable, they are only a general guide to the property and, accordingly, if there is any point which is of particular importance to you please contact the office and we will be pleased to check it for you, especially if you are contemplating travelling some distance to view the property. These approximate room sizes are only intended as general guidance. You must verify the dimensions carefully before ordering carpets or any built in furniture. Please note we have not tested the services or any of the equipment or appliances in this property, accordingly we strongly advise prospective buyers to commission their own survey or service report before finalising their offer to purchase. These particulars are issued in good faith but do not constitute representations of fact or form part of any offer or contract. The matters referred to in these particulars should be independently verified by prospective buyers or tenants. Neither Sparks Ellison nor any of its employees or agents has any authority to make or give any representation or warranty whatever in relation to this property. Your home is at risk if you do not keep up repayments on a mortgage or other loan secured on it. Written quotations available on request. All loans secured on property. Life assurance usually required.

