



sparks ellison

3 Beresford Close, Chandler's Ford, SO53 2LX

£375,000

A well presented four bedroom semi detached family home arranged over three floors. Beresford Close is a popular cul de sac location conveniently placed for the centre of Chandler's Ford as well as access to the M27 and M3 motorways. The property provides well planned accommodation including a 15' sitting room, 17' kitchen/breakfast room, bathroom and separate wc. Other benefits include a 'storage' garage measuring 12'9" in length leading into a lean to. Externally there is a driveway for three vehicles and a 37' southerly facing rear garden.

ACCOMMODATION

GROUND FLOOR

Entrance Hall:

Stairs to first floor, under stairs storage cupboard.

Sitting Room:

15'4" x 11'4" (4.67m x 3.45m) Fireplace surround and hearth with inset electric fire, parquet flooring.

Kitchen/Breakfast Room:

17'2" x 8'7" (5.23m x 2.62m) Built in twin ovens, built in gas hob, fitted extractor hood, integrated dishwasher, integrated microwave, integrated fridge freezer, plumbing for washing machine, fitted breakfast bar.

FIRST FLOOR

Landing:

Stairs to second floor, built-in storage cupboard.

Bedroom 1:

13'2" including wardrobe depth x 9'11" (4.01m including wardrobe depth x 3.02m) Fitted wardrobes.

Bedroom 3:

11' x 10' (3.35m x 3.05m)

Bedroom 4:

7' x 5'8" (2.13m x 1.73m)

Bathroom:

6'10" x 4'9" (2.08m x 1.45m) Comprising corner bath with shower attachment, wash hand basin.

Cloakroom:

4'1" x 2'8" (1.24m x 0.81m) Comprising WC.

SECOND FLOOR

Landing:

Bedroom 2:

11'9" x 9'11" (3.58m x 3.02m) Built in storage cupboard.

OUTSIDE

Front:

Blocked paved driveway providing off road parking for approximately three vehicles.

Rear Garden:

Measures approximately 37' x 27' and comprises two areas laid to timber deck, area laid to slate clippings, area laid to lawn, planted beds.

Garage:

12'9" x 7'5" (3.89m x 2.26m) Electric roller door, cupboard housing boiler.

Lean to:

15'6" x 7'8" (4.72m x 2.34m)

OTHER INFORMATION

Tenure:

Freehold

Approximate Age:

1960's

Approximate Area:

109.3sqm/1176sqft (Including garage)

Sellers Position:

No forward chain

Heating:

Gas central heating

Windows:

UPVC double glazed windows

Infant/Junior School:

Fryern Infant/Junior School

Secondary School:

Toynbee Secondary School

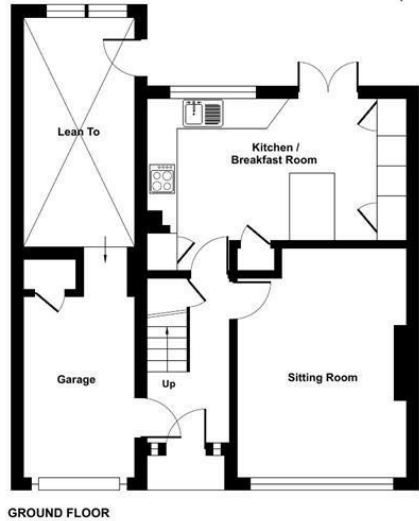
Council Tax:

Band C

Local Council:

Eastleigh Borough Council - 02380 688000

Ground Floor = 425 sq ft / 39.5 sq m
 First Floor = 439 sq ft / 40.8 sq m
 Second Floor = 204 sq ft / 19 sq m
 Garage = 108 sq ft / 10 sq m
 Total = 1176 sq ft / 109.3 sq m
 For identification only - Not to scale



Floor plan produced in accordance with RICS Property Measurement Standards incorporating International Property Measurement Standards (IPMS2 Residential). © richiecom 2024. Produced for Sparks Ellison. REF: 1090091



Energy Efficiency Rating		Current	Potential
Very energy efficient - lower running costs			
(92 plus) A			
(81-91) B			77
(69-80) C			
(55-68) D		53	
(39-54) E			
(21-38) F			
(1-20) G			
Not energy efficient - higher running costs			
England & Wales		EU Directive 2002/91/EC	

94 Winchester Road, Chandler's Ford, Hampshire, SO53 2GJ

Sales: t: 02380 255333 e: property@sparksellison.co.uk
 Lettings: t: 02380 018518 e: lettings@sparksellison.co.uk

While we endeavour to make our sales particulars fair, accurate and reliable, they are only a general guide to the property and, accordingly, if there is any point which is of particular importance to you please contact the office and we will be pleased to check it for you, especially if you are contemplating travelling some distance to view the property. These approximate room sizes are only intended as general guidance. You must verify the dimensions carefully before ordering carpets or any built in furniture. Please note we have not tested the services or any of the equipment or appliances in this property, accordingly we strongly advise prospective buyers to commission their own survey or service report before finalising their offer to purchase. These particulars are issued in good faith but do not constitute representations of fact or form part of any offer or contract. The matters referred to in these particulars should be independently verified by prospective buyers or tenants. Neither Sparks Ellison nor any of its employees or agents has any authority to make or give any representation or warranty whatever in relation to this property. Your home is at risk if you do not keep up repayments on a mortgage or other loan secured on it. Written quotations available on request. All loans secured on property. Life assurance usually required.



