



# 28 Oakhill Court Oakhill Close, SO53 2PY

£150,000

A purpose built one bedroom first floor apartment in a block providing convenient access to the centre of Chandler's Ford and offered for sale with no forward chain. The flat would benefit from some sympathetic updating throughout but benefits from electric heating and UPVC double glazing and currently provides 14' sitting room, separate 11' kitchen along with double bedroom and bathroom.

## ACCOMMODATION

### Entrance Hall:

### Sitting Room:

14'9" x 11'7" (4.50m x 3.53m)

### Kitchen:

11'7" x 7'6" (3.53m x 2.29m) Fitted with a range of basic base and eye level units. space, plumbing and provision for a variety of kitchen appliances. space for small breakfast table and chairs. full height storage cupboard.

### Bathroom:

7'6" x 6'3" (2.29m x 1.91m) White suite comprising enclosed bath, wash hand basin and WC. tiled walls.

### Bedroom:

12'3" x 9'9" (3.73m x 2.97m)

## OUTSIDE:

Oakhill Court sits within well manicured communal gardens and benefits from allocated parking.

## OTHER INFORMATION

### Tenure:

Leasehold

### Term of Lease:

189 years from 1989

### Maintenance Charge:

£321.25 quarterly (Jan, Apr, Jul & Oct)

### Approximate Age:

1982

### Approximate Area:

48.2sqm/519sqft

### Sellers Position:

No forward chain

### Heating:

Electric storage heating

### Windows:

UPVC double glazed windows

### Infant/Junior School:

Fryern Infant/Junior School

### Secondary School:

Toynbee Secondary School

### Council Tax:

Band A

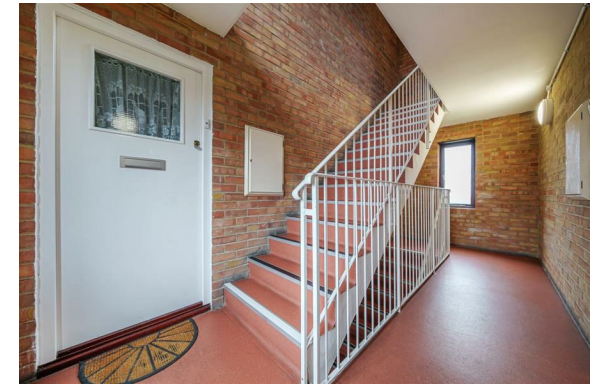
### Local Council:

Eastleigh Borough Council - 02380 688000

First Floor = 519 sq ft / 48.2 sq m  
For identification only - Not to scale



FIRST FLOOR



Energy Efficiency Rating		
	Current	Potential
Very energy efficient - lower running costs		
(92 plus) <b>A</b>		
(81-91) <b>B</b>	79	81
(69-80) <b>C</b>		
(55-68) <b>D</b>		
(39-54) <b>E</b>		
(21-38) <b>F</b>		
(1-20) <b>G</b>		
Not energy efficient - higher running costs		
<b>England &amp; Wales</b>	EU Directive 2002/91/EC	

Floor plan produced in accordance with RICS Property Measurement Standards incorporating International Property Measurement Standards (IPMS2 Residential). © rickcom 2024. Produced for Sparks Ellison. REF: 1088101

94 Winchester Road, Chandler's Ford, Hampshire, SO53 2GJ

Sales: t: 02380 255333 e: [property@sparksellison.co.uk](mailto:property@sparksellison.co.uk)

Lettings: t: 02380 018518 e: [lettings@sparksellison.co.uk](mailto:lettings@sparksellison.co.uk)



While we endeavour to make our sales particulars fair, accurate and reliable, they are only a general guide to the property and, accordingly, if there is any point which is of particular importance to you please contact the office and we will be pleased to check it for you, especially if you are contemplating travelling some distance to view the property. These approximate room sizes are only intended as general guidance. You must verify the dimensions carefully before ordering carpets or any built in furniture. Please note we have not tested the services or any of the equipment or appliances in this property, accordingly we strongly advise prospective buyers to commission their own survey or service report before finalising their offer to purchase. These particulars are issued in good faith but do not constitute representations of fact or form part of any offer or contract. The matters referred to in these particulars should be independently verified by prospective buyers or tenants. Neither Sparks Ellison nor any of its employees or agents has any authority to make or give any representation or warranty whatever in relation to this property. Your home is at risk if you do not keep up repayments on a mortgage or other loan secured on it. Written quotations available on request. All loans secured on property. Life assurance usually required.

