



1 Keble Road, Chandlers Ford, SO53 3DR

£390,000

An exceptionally well presented three bedroom semi detached home benefiting from spacious well proportioned accommodation to include an 18'2" x 11'7" living room with doors to a stunning conservatory and a kitchen and re-fitted cloakroom completing the ground floor. On the first floor are three spacious bedrooms together with a re-fitted en-suite shower room and re-fitted bathroom. Externally the property benefits from a double width driveway leading to a garage with a pleasant rear garden measuring approximately 44' x 35'.

ACCOMMODATION

GROUND FLOOR

Entrance Hall:

Stairs to first floor, laminate wood floor, door to garage.

Cloakroom:

5'10" x 2'10" (1.78m x 0.86m) White suite comprising wash basin, w.c.

Sitting Room:

18'2" x 11'7" (5.54m x 3.53m) Under stairs storage cupboard, double doors to conservatory.

Conservatory:

12'3" x 8' (3.73m x 2.44m) Glass roof, radiator, double doors to outside and single door.

Kitchen:

9'7" x 8'11" (2.92m x 2.72m) Range of fitted units, stainless steel electric oven and gas hob with extractor hood over, space and plumbing for further appliances, laminate wood floor.

FIRST FLOOR

Landing:

Storage cupboard, airing cupboard.

Bedroom 1:

18'1" x 10'6" max (5.51m x 3.20m max) Range of built in wardrobes.

En-suite Shower Room:

6'4" x 5'2" (1.93m x 1.57m) Modern white suite with chrome fittings comprising double width walk in shower, wash basin with cupboard under, tiled floor.

Bedroom 2:

11'3" x 9'1" (3.43m x 2.77m)

Bedroom 3:

8'9" x 8'7" (2.67m x 2.62m)

Bathroom:

6'7" x 5'7" (2.01m x 1.70m) Modern white suite comprising bath with shower unit over, wash basin with cupboard under, w.c., tiled floor.

Front Garden:

Double width driveway providing off street parking for two cars with planted borders and side gate to rear garden.

Rear Garden:

A particularly attractive feature of the property measuring approximately 44' x 35'. Two areas of decking leading onto a good size lawn enclosed by fencing.

Garage:

16'11" x 8'2" (5.16m x 2.49m) Light and power.

OTHER INFORMATION

Tenure:

Freehold

Approximate Age:

2003

Approximate Area:

107sqm/1153sqft

Sellers Position:

Looking for forward purchase

Heating:

Gas central heating

Windows:

UPVC double glazed windows

Loft Space:

Partially boarded with light connected

Infant/Junior School:

Fryern Infant/Junior Schools

Secondary School:

Toynbee Secondary School

Council Tax:

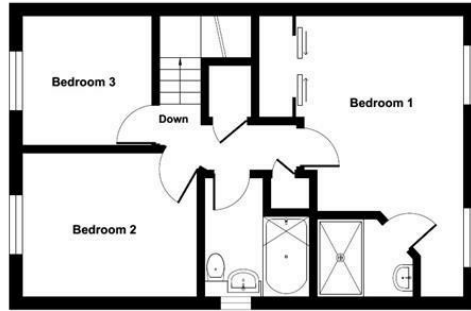
Band C

Local Council:

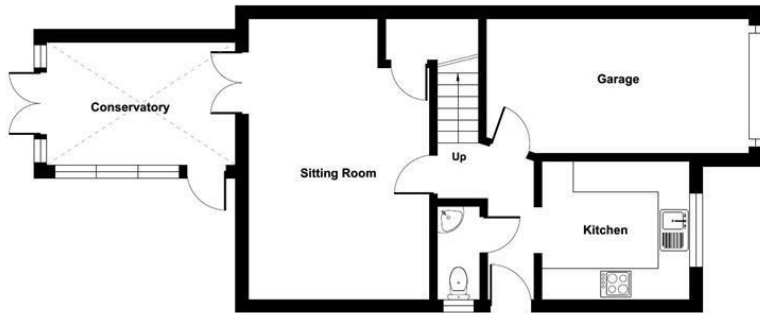
Eastleigh Borough Council - 02380 688000



Ground Floor = 494 sq ft / 46 sq m
 First Floor = 514 sq ft / 48 sq m
 Garage = 145 sq ft / 13 sq m
 Total = 1153 sq ft / 107 sq m
 For identification only - Not to scale



FIRST FLOOR



GROUND FLOOR



Energy Efficiency Rating		Current	Potential
Very energy efficient - lower running costs			
(92 plus) A			87
(81-91) B		75	
(69-80) C			
(55-68) D			
(39-54) E			
(21-38) F			
(1-20) G			
Not energy efficient - higher running costs			
England & Wales		EU Directive 2002/91/EC	

Floor plan produced in accordance with RICS Property Measurement Standards incorporating International Property Measurement Standards (IPMS2 Residential). © nichicom 2022. Produced for Sparks Ellison. REF: 648941

94 Winchester Road, Chandler's Ford, Hampshire, SO53 2GJ

Sales: t: 02380 255333 e: property@sparksellison.co.uk

Lettings: t: 02380 018518 e: lettings@sparksellison.co.uk

While we endeavour to make our sales particulars fair, accurate and reliable, they are only a general guide to the property and, accordingly, if there is any point which is of particular importance to you please contact the office and we will be pleased to check it for you, especially if you are contemplating travelling some distance to view the property. These approximate room sizes are only intended as general guidance. You must verify the dimensions carefully before ordering carpets or any built in furniture. Please note we have not tested the services or any of the equipment or appliances in this property, accordingly we strongly advise prospective buyers to commission their own survey or service report before finalising their offer to purchase. These particulars are issued in good faith but do not constitute representations of fact or form part of any offer or contract. The matters referred to in these particulars should be independently verified by prospective buyers or tenants. Neither Sparks Ellison nor any of its employees or agents has any authority to make or give any representation or warranty whatever in relation to this property. Your home is at risk if you do not keep up repayments on a mortgage or other loan secured on it. Written quotations available on request. All loans secured on property. Life assurance usually required.



