



sparks ellison

# 3 Pitmore Road, Allbrook, SO50 4NE

£425,000

Three bedroom detached bungalow situated in the popular residential district of Allbrook. The property briefly comprises 16' sitting room, newly fitted 12' kitchen, family bathroom and en-suite to master bedroom accompanied by three generous well proportioned bedrooms. Externally the property enjoys a generous frontage with off road parking, carport leading to single garage and an enclosed rear garden.

## ACCOMMODATION

### Hallway:

Full height storage cupboard.

### Sitting Room:

16'7" x 11'9" (5.05m x 3.58m) Laminate wood flooring.

### Kitchen:

12'5" x 11'1" (3.78m x 3.38m) Door leading to garden, newly fitted matching base and eye level units with sink, contrasting work surfaces, concealed washing machine, built in electric oven, electric hob and extractor over, built in dishwasher space for table and chairs.

### Bedroom 1:

12'5" x 10'9" max(3.78m x 3.28m max)

### En-suite:

Recently installed with enclosed shower cubicle with twin heads, wash hand basin, w.c., extractor fan, vanity mirror.

### Bedroom 2:

9'2" x 8'9" (2.79m x 2.67m)

### Bedroom 3:

10'9" x 7'2" (3.28m x 2.18m)

### Bathroom:

8'5" x 5'6" (2.57m x 1.68m) Modern white suite comprising panel enclosed bath, vanity wash hand basin and matching WC, tiled walls and floor, chrome towel radiator.

## OUTSIDE

### Front:

Off road parking which leads to the car port and garage. Area laid with lawn and carefully planted borders.

### Rear Garden:

Measures approximately 43' x 28' is mainly laid to lawn and enclosed with wooden

fencing with concrete posts, raised wooden decking area ideal for external dining area.

### Garage:

18'9" x 7'9" (5.72m x 2.36m) Up and over door and window to side elevation. Light and power.

## OTHER INFORMATION

### Tenure:

Freehold

### Approximate Age:

1960's

### Approximate Area:

75.5sqm/813sqft

### Sellers Position:

Looking for forward purchase

### Heating:

Gas central heating

### Windows:

UPVC double glazed windows

### Loft Space:

Partially boarded with light connected

### Infant/Junior School:

Otterbourne Primary School

### Secondary School:

Thornden Secondary School

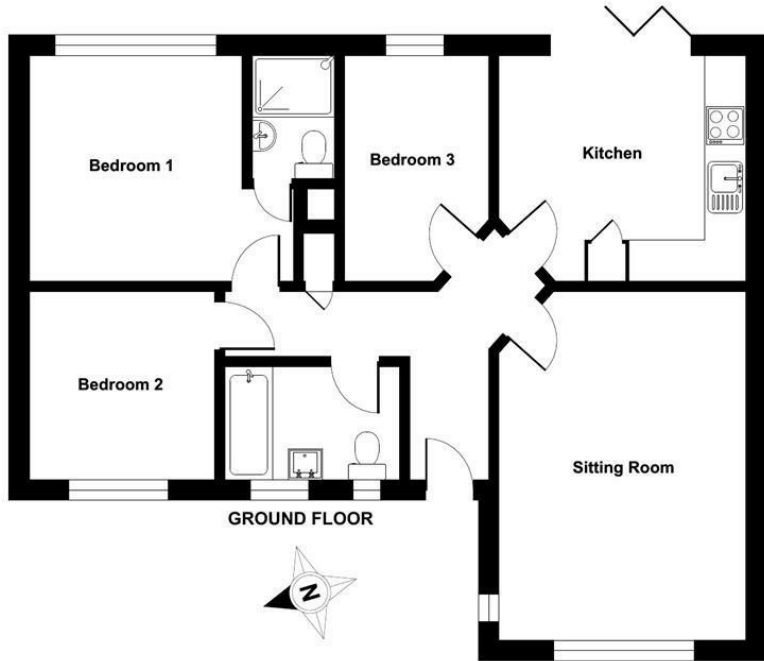
### Council Tax:

Band D

### Local Council:

Eastleigh Borough Council - 02380 688000

Ground Floor = 813 sq ft / 75.5 sq m  
For identification only - Not to scale



Energy Efficiency Rating		Current	Potential
Very energy efficient - lower running costs			
(92 plus) A			85
(81-91) B			
(69-80) C			
(55-68) D		66	
(39-54) E			
(21-38) F			
(1-20) G			
Not energy efficient - higher running costs			
England & Wales		EU Directive 2002/91/EC	

Floor plan produced in accordance with RICS Property Measurement Standards incorporating International Property Measurement Standards (IPMS2 Residential). © nrichcom 2024. Produced for Sparks Ellison. REF: 1094906

94 Winchester Road, Chandler's Ford, Hampshire, SO53 2GJ

Sales: t: 02380 255333 e: [property@sparksellison.co.uk](mailto:property@sparksellison.co.uk)

Lettings: t: 02380 018518 e: [lettings@sparksellison.co.uk](mailto:lettings@sparksellison.co.uk)



While we endeavour to make our sales particulars fair, accurate and reliable, they are only a general guide to the property and, accordingly, if there is any point which is of particular importance to you please contact the office and we will be pleased to check it for you, especially if you are contemplating travelling some distance to view the property. These approximate room sizes are only intended as general guidance. You must verify the dimensions carefully before ordering carpets or any built in furniture. Please note we have not tested the services or any of the equipment or appliances in this property, accordingly we strongly advise prospective buyers to commission their own survey or service report before finalising their offer to purchase. These particulars are issued in good faith but do not constitute representations of fact or form part of any offer or contract. The matters referred to in these particulars should be independently verified by prospective buyers or tenants. Neither Sparks Ellison nor any of its employees or agents has any authority to make or give any representation or warranty whatever in relation to this property. Your home is at risk if you do not keep up repayments on a mortgage or other loan secured on it. Written quotations available on request. All loans secured on property. Life assurance usually required.

