



13 Corinthian Road, Chandler's Ford, SO53 2BA

£487,500

A delightful three bedroom home situated in a popular and established location close to the centre of Chandler's Ford. The property has been extended to the ground floor to provide a spacious kitchen/breakfast room and further benefits include detached garage, rear garden with southerly aspect and replacement double glazed windows. The location affords easy and convenient access to amenities around Fryern Arcade and Corinthian Road sits within catchment for Thornden school. The property is offered for sale with no forward chain.

ACCOMMODATION

GROUND FLOOR

Reception Hall:

Stairs to first floor with cupboard under

Sitting Room:

18'0" x 11'0" (5.49m x 3.35m) Fitted electric fire.

Bedroom 3:

10'5" x 9'0" (3.18m x 2.74m)

Kitchen/Breakfast Room:

Kitchen Area:

9'6" x 9'0" (2.90m x 2.74m) Built in double oven, built in gas hob, fitted extractor hood, space and plumbing for washing machine, space and plumbing for dishwasher.

Breakfast Area:

12'0" x 9'0" (3.66m x 2.74m) Built in fridge/freezer, wall mounted boiler.

Bathroom:

7'11" x 5'6" (2.41m x 1.68m) White suite with chrome fittings comprising bath with shower over, wash hand basin, WC.

FIRST FLOOR

Landing:

Access to loft space, built in airing cupboard.

Bedroom 1:

10'5" to wardrobes x 10'5" (3.18m to wardrobes x 3.18m) Built in wardrobe, fitted wardrobes along one wall.

Bedroom 2:

12'6" max x 11'6" max (3.81m x 3.51m) (L shaped) Built in wardrobe.

Cloakroom:

5'3" x 3'7" (1.60m x 1.09m) White suite with chrome fittings comprising wash hand basin, WC.

OUTSIDE

Front:

Driveway runs along the side of the property and provides off road parking leading to garage, with further gravelled area providing parking and adjacent border, side gate to rear garden.

Rear Garden:

Measures approximately 60' x 31' and a particularly attractive feature of the property benefiting from a pleasant southerly aspect. A patio adjoins the house leading on to a lawned area enclosed by well stocked flower and shrub borders. A further patio is situated in the rear corner of the garden which is enclosed by fencing. Outside lighting, outside tap.

Garage:

17'1" x 9' (5.21m x 2.74m) With up and over door, power and light.

OTHER INFORMATION

Tenure:

Freehold

Approximate Age:

1960's

Approximate Area:

97.2sqm/1048sqft

Sellers Position:

No forward chain

Heating:

Gas central heating

Windows:

UPVC double glazing

Loft Space:

Fully boarded with light connected

Infant/Junior School:

Scantabout Primary School

Secondary School:

Thornden Secondary School

Local Council:

Eastleigh Borough Council - 02380 688000

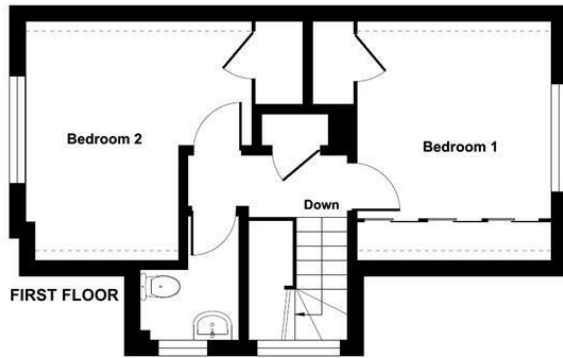
Council Tax:

Band D

Ground Floor = 660 sq ft / 61.3 sq m
 First Floor = 367 sq ft / 34 sq m
 Limited Use Area(s) = 21 sq ft / 1.9 sq m
 Total = 1048 sq ft / 97.2 sq m
 For identification only - Not to scale



Denotes restricted head height



Floor plan produced in accordance with RICS Property Measurement Standards incorporating International Property Measurement Standards (IPMS2 Residential). © nrichcom 2024. Produced for Sparks Ellison. REF: 1087162



Energy Efficiency Rating		Current	Potential
Very energy efficient - lower running costs			
(92 plus) A			
(81-91) B			79
(69-80) C			
(55-68) D		54	
(39-54) E			
(21-38) F			
(1-20) G			
Not energy efficient - higher running costs			
England & Wales		EU Directive 2002/91/EC	

94 Winchester Road, Chandler's Ford, Hampshire, SO53 2GJ

Sales: t: 02380 255333 e: property@sparksellison.co.uk
 Lettings: t: 02380 018518 e: lettings@sparksellison.co.uk

While we endeavour to make our sales particulars fair, accurate and reliable, they are only a general guide to the property and, accordingly, if there is any point which is of particular importance to you please contact the office and we will be pleased to check it for you, especially if you are contemplating travelling some distance to view the property. These approximate room sizes are only intended as general guidance. You must verify the dimensions carefully before ordering carpets or any built in furniture. Please note we have not tested the services or any of the equipment or appliances in this property, accordingly we strongly advise prospective buyers to commission their own survey or service report before finalising their offer to purchase. These particulars are issued in good faith but do not constitute representations of fact or form part of any offer or contract. The matters referred to in these particulars should be independently verified by prospective buyers or tenants. Neither Sparks Ellison nor any of its employees or agents has any authority to make or give any representation or warranty whatever in relation to this property. Your home is at risk if you do not keep up repayments on a mortgage or other loan secured on it. Written quotations available on request. All loans secured on property. Life assurance usually required.



