



sparks ellison

244 Chestnut Avenue, Chandler's Ford, SO53 3HN

£375,000

A beautiful Grade II listed end of terrace thatched cottage situated conveniently for Eastleigh Town Centre, the M27 & M3 motorways, mainline railway stations, International Airport and the city of Southampton. The ground floor accommodation provides a large sitting / dining room at the front of the property with an L shaped Kitchen / Breakfast Room at the rear that contains built in appliances. There is also a modern shower room that serves the two first floor bedrooms. The mature rear garden is a particular feature of the property measuring approximately 78' in length and benefitting from a summer house.

ACCOMMODATION:

Ground Floor:

Entrance Hall:

Stairs to first floor, tiled floor.

Shower Room:

6'2" x 5'6" (1.88m x 1.68m) White suite with chrome fittings comprising shower in cubicle, wash hand basin, WC, tiled floor, tiled walls.

Sitting/Dining room:

20'11" x 13'8" (6.38m x 4.17m) Feature brick built fireplace surround and tiled hearth with electric fire, tiled floor, under stairs storage cupboard.

Kitchen/Breakfast Room:

22' max x 13' max (6.71m x 3.96m) Built-in double oven, built-in five ring gas hob, fitted extractor hood, integrated dishwasher, integrated washing machine, integrated fridge/freezer, space for table and chairs, space for tumble dryer, boiler in cupboard, tiled floor.

First Floor:

Landing:

Access to loft space.

Bedroom 1:

12'3" x 10'8" (3.73m x 3.25m) Built in storage cupboard.

Bedroom 2:

10'10" x 10'1" (3.30m x 3.07m) Wardrobes to remain

OUTSIDE:

Front:

Block paved driveway providing off-road parking, planted bed, gate leading to a side area which is laid to shingle with paved slabs and access to the rear garden.

Rear Garden:

Measures approximately 78' x 27' and comprises area laid to lawn, area laid to timber deck, outside tap, variety of mature plants, bushes, shrubs and trees, garden shed, summerhouse with decking area.

OTHER INFORMATION

Tenure:

Freehold

Approximate Age:

1800's

Approximate Area:

978sqft/90.9sqm (Including outbuilding and limited use areas)

Sellers Position:

No forward chain

Heating:

Gas central heating

Windows:

UPVC and wooden

Loft Space:

Partially boarded with light connected

Infant/Junior School:

Nightingale Infant/Junior School

Secondary School:

Crestwood Community College

Local Council:

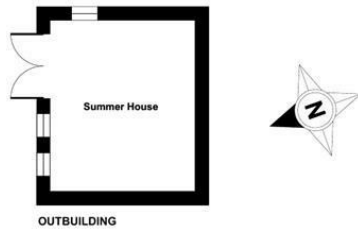
Eastleigh Borough Council - 02380 688000

Council Tax:

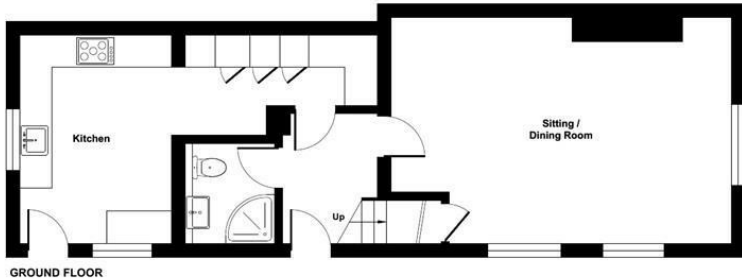
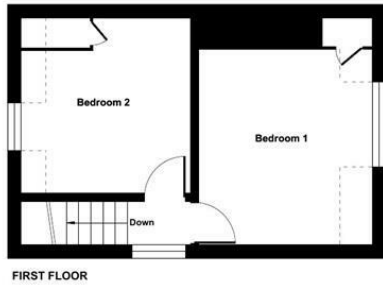
Band D

Ground Floor = 584 sq ft / 54.3 sq m
 First Floor = 275 sq ft / 25.6 sq m
 Outbuilding = 94 sq ft / 8.7 sq m
 Limited Use Area(s) = 25 sq ft / 2.3 sq m
 Total = 978 sq ft / 90.9 sq m

For identification only - Not to scale



Denotes restricted head height



Energy Efficiency Rating		
	Current	Potential
Very energy efficient - lower running costs		
(92 plus) A		
(81-91) B		
(69-80) C		72
(55-68) D	56	
(39-54) E		
(21-38) F		
(1-20) G		
Not energy efficient - higher running costs		
England & Wales	EU Directive 2002/91/EC	

Floor plan produced in accordance with RICS Property Measurement Standards incorporating International Property Measurement Standards (IPMS2 Residential). © nichecom 2023. Produced for Sparks Ellison. REF: 968696

94 Winchester Road, Chandler's Ford, Hampshire, SO53 2GJ

Sales: t: 02380 255333 e: property@sparksellison.co.uk

Lettings: t: 02380 018518 e: lettings@sparksellison.co.uk



While we endeavour to make our sales particulars fair, accurate and reliable, they are only a general guide to the property and, accordingly, if there is any point which is of particular importance to you please contact the office and we will be pleased to check it for you, especially if you are contemplating travelling some distance to view the property. These approximate room sizes are only intended as general guidance. You must verify the dimensions carefully before ordering carpets or any built in furniture. Please note we have not tested the services or any of the equipment or appliances in this property, accordingly we strongly advise prospective buyers to commission their own survey or service report before finalising their offer to purchase. These particulars are issued in good faith but do not constitute representations of fact or form part of any offer or contract. The matters referred to in these particulars should be independently verified by prospective buyers or tenants. Neither Sparks Ellison nor any of its employees or agents has any authority to make or give any representation or warranty whatever in relation to this property. Your home is at risk if you do not keep up repayments on a mortgage or other loan secured on it. Written quotations available on request. All loans secured on property. Life assurance usually required.

