



sparks ellison

19 Oaktree Close, Winchester, SO21 1UT

£300,000

A delightful three bedroom end of terrace house offered for sale with no forward chain situated in a cul-de-sac within the popular village of Colden Common. The property benefits from a good size hallway and downstairs cloakroom leading to a 15'8" kitchen/dining room and 16'6" sitting room. On the first floor, three bedrooms are served by a spacious bathroom. A particularly attractive feature of the property is the rear garden measuring 46' x 31' with an additional area of garden to the side measuring 24'6" x 13'2". There is also the benefit of a single garage at the rear end of the garden. The village of Colden Common benefits from an excellent range of day to day amenities including schooling and shops, with the City of Winchester approximately 5 miles away to the north, town centre of Eastleigh 2 miles away to the south and Chandler's Ford centre approximately 4 miles away. Easy access can also be gained to junctions 11 and 12 of the M3, M27 and mainline railway stations.

ACCOMMODATION

GROUND FLOOR

Reception Hall:

Stairs to first floor.

Cloakroom:

Wash basin, w.c.

Sitting Room:

16'6" x 11'9" (5.03m x 3.58m) Fireplace with electric fire, patio doors and single door to rear garden.

Kitchen/Dining Room:

15'8" x 8' (4.78m x 2.44m) Range of fitted units, gas oven, gas hob, space and plumbing for further appliances, space for table and chairs, understairs storage cupboard.

FIRST FLOOR

Landing:

Double cupboard, single cupboard, hatch to loft space.

Bedroom 1:

11'9" x 11'3" (3.58m x 3.43m) Airing cupboard.

Bedroom 2:

9'8" x 8'1" (2.95m x 2.46m)

Bedroom 3:

8'8" x 7' (2.64m x 2.13m)

OUTSIDE

Bathroom:

8' x 7'6" (2.44m x 2.29m) Suite comprising bath with shower unit over, wash basin, w.c.

Front:

Lawned area with flower and shrub borders and pathway to front door, side gate to rear garden.

Rear Garden:

Approximately 46'x 31'. A patio adjoins the property leading onto a lawned area surrounded by well stocked flower and shrub borders enclosed by fencing and walling. Rear gate to garage.

Side Garden:

Approximately 24'6" x 13'2". Hardstanding.

Garage:

16'8" x 8'3" (5.08m x 2.51m)

OTHER INFORMATION

Tenure:

Freehold

Approximate Age:

1980

Approximate Area:

850sqft/78.8sqm

Sellers Position:

No forward chain

Heating:

Gas central heating

Windows:

UPVC double glazing

Infant/Junior School:

Colden Common Primary

Secondary School:

Kings School

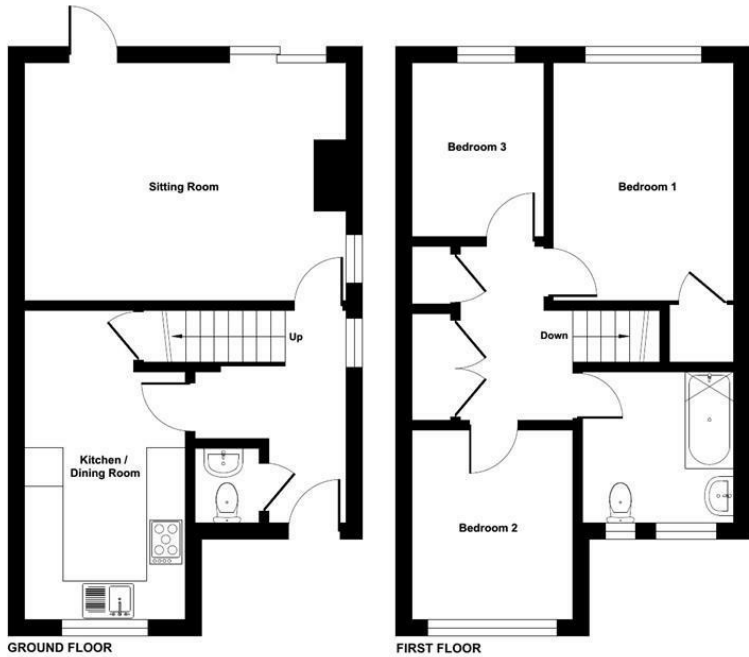
Council Tax:

Band C

Local Council:

Winchester City Council - 01962 840222

Ground Floor = 425 sq ft / 39.4 sq m
 First Floor = 425 sq ft / 39.4 sq m
 Total = 850 sq ft / 78.8 sq m
 For identification only - Not to scale



Energy Efficiency Rating		Current	Potential
Very energy efficient - lower running costs			
(92 plus) A			
(81-91) B			83
(69-80) C		67	
(55-68) D			
(39-54) E			
(21-38) F			
(1-20) G			
Not energy efficient - higher running costs			
England & Wales		EU Directive 2002/91/EC	

Floor plan produced in accordance with RICS Property Measurement Standards incorporating International Property Measurement Standards (IPMS2 Residential). © nrichcom 2024. Produced for Sparks Ellison. REF: 1115434

94 Winchester Road, Chandler's Ford, Hampshire, SO53 2GJ

Sales: t: 02380 255333 e: property@sparksellison.co.uk
 Lettings: t: 02380 018518 e: lettings@sparksellison.co.uk

While we endeavour to make our sales particulars fair, accurate and reliable, they are only a general guide to the property and, accordingly, if there is any point which is of particular importance to you please contact the office and we will be pleased to check it for you, especially if you are contemplating travelling some distance to view the property. These approximate room sizes are only intended as general guidance. You must verify the dimensions carefully before ordering carpets or any built in furniture. Please note we have not tested the services or any of the equipment or appliances in this property, accordingly we strongly advise prospective buyers to commission their own survey or service report before finalising their offer to purchase. These particulars are issued in good faith but do not constitute representations of fact or form part of any offer or contract. The matters referred to in these particulars should be independently verified by prospective buyers or tenants. Neither Sparks Ellison nor any of its employees or agents has any authority to make or give any representation or warranty whatever in relation to this property. Your home is at risk if you do not keep up repayments on a mortgage or other loan secured on it. Written quotations available on request. All loans secured on property. Life assurance usually required.



