



45 Corinthian Road, Chandler's Ford, SO53 2AY

£2,000 Per Calendar Month

A magnificent three/four bedroom detached chalet style house, situated in the popular Scantabout area. This wonderful home has been extended to provide spacious well proportioned rooms and finished to a very high standard. A particular feature is the open plan kitchen/dining/family area with two sets of double doors opening onto the south-west facing rear garden. This is complemented by a spacious sitting room and ground floor bedroom/study and utility/cloakroom. On the first floor are three double bedrooms an en suite and spacious wet room. The property also benefits from a good size driveway, detached gym /home office and school catchments include Scantabout and Thornden.

ACCOMMODATION

GROUND FLOOR

Entrance Hall:

Stairs to first floor with cupboard under.

Sitting Room:

19'4" x 12' (5.89m x 3.66m) Bay window to the front, folding double doors to kitchen/dining/family room.

Kitchen/Dining/Family Room:

19'8" x 19'3" (5.99m x 5.87m) An L shaped room with two sets of double doors opening on to the south-west facing garden. The kitchen area is comprehensively fitted with a range of modern white gloss units and wooden worktops, Bosch electric oven and five ring gas hob with extractor hood over, integrated dishwasher and fridge freezer, integrated wine cooler, cupboard housing boiler. The dining/sitting area affords a very pleasant area in which to dine, relax and entertain.

Bedroom 4/Study:

11'8" x 7' (3.56m x 2.13m) Bay window.

Utility/Cloakroom:

6'10" x 5'10" (2.08m x 1.78m) Free standing washing machine, sink unit with cupboard under, WC.

FIRST FLOOR

Landing:

Storage cupboard.

Bedroom 1:

12'2" x 9'11" (3.71m x 3.02m) Range of built in wardrobes along one wall, further built in wardrobe.

En Suite:

8'8" x 3'2" (2.64m x 0.97m) Comprising shower enclosure, wash hand basin, WC.

Bedroom 2:

15'3" max x 11' (4.65m max x 3.35m) Double doors with Juliette balcony overlooking the rear garden, built in wardrobe.

Bedroom 3:

12'7" x 10' (3.84m x 3.05m) Range of built in wardrobes along one wall.

Shower Room:

11' x 6'6" max (3.66m x 1.70m) Spacious wet room style area with shower area and shower unit, wash hand basin and vanity unit, WC, tiled walls and floor.

OUTSIDE

Front:

To the front of the property is a large gravel driveway affording parking for several vehicles which extends along side the property with a gate affording access to a block paved driveway. The remainder of the front garden has planted borders.

Rear Garden:

The rear garden is an attractive feature of the property measuring approximately 49' x 38'6" with a pleasant south westerly aspect. Adjoining the property is a good size paved terrace incorporating a circular design leading on to a lawned area surrounded by well stocked flower and shrub borders and fencing.

Gym/Home Office:

18'5" x 9'11" (5.61m x 3.02m) With electric under floor heating, power and light.

Shower Room:

10' x 3'6" (3.05m x 0.91m) Comprising shower in cubicle, wash hand basin, WC.

OTHER INFORMATION

Approximate Age:

1970's

Approximate Area:

141.8sqm/1526sqft

Management:

Fully managed

Availability:

Beginning May 2024

Deposit:

£2,307

Furnished/Unfurnished:

Unfurnished

Heating:

Gas central heating

Windows:

UPVC double glazed windows

Infant/Junior School:

Scantabout Primary School

Secondary School:

Thornden Secondary School

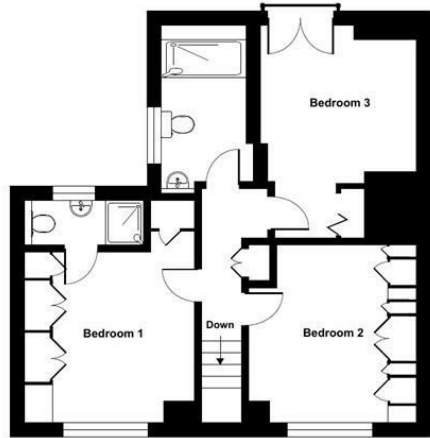
Council Tax:

Band D

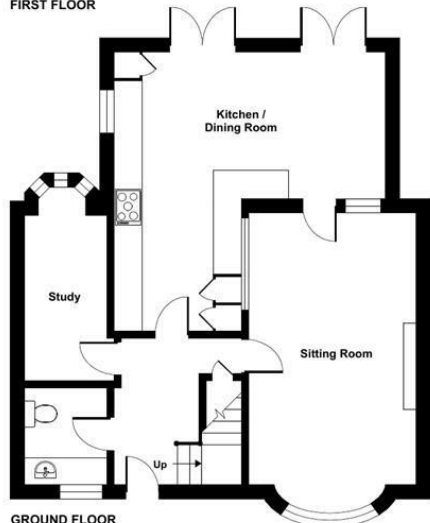
Local Council:

Eastleigh Borough Council - 02380 688000

Ground Floor = 762 sq ft / 70.8 sq m
 First Floor = 654 sq ft / 60.8 sq m
 Garage = 110 sq ft / 10.2 sq m
 Total = 1526 sq ft / 141.8 sq m
 For identification only - Not to scale



FIRST FLOOR



GROUND FLOOR



Energy Efficiency Rating		Current	Potential
Very energy efficient - lower running costs			
(92 plus) A			
(81-91) B			
(69-80) C			
(55-68) D		61	73
(39-54) E			
(21-38) F			
(1-20) G			
Not energy efficient - higher running costs			
England & Wales		EU Directive 2002/91/EC	

94 Winchester Road, Chandler's Ford, Hampshire, SO53 2GJ

Sales: t: 02380 255333 e: property@sparksellison.co.uk

Lettings: t: 02380 018518 e: lettings@sparksellison.co.uk

While we endeavour to make our sales particulars fair, accurate and reliable, they are only a general guide to the property and, accordingly, if there is any point which is of particular importance to you please contact the office and we will be pleased to check it for you, especially if you are contemplating travelling some distance to view the property. These approximate room sizes are only intended as general guidance. You must verify the dimensions carefully before ordering carpets or any built in furniture. Please note we have not tested the services or any of the equipment or appliances in this property, accordingly we strongly advise prospective buyers to commission their own survey or service report before finalising their offer to purchase. These particulars are issued in good faith but do not constitute representations of fact or form part of any offer or contract. The matters referred to in these particulars should be independently verified by prospective buyers or tenants. Neither Sparks Ellison nor any of its employees or agents has any authority to make or give any representation or warranty whatever in relation to this property. Your home is at risk if you do not keep up repayments on a mortgage or other loan secured on it. Written quotations available on request. All loans secured on property. Life assurance usually required.



