



sparks ellison

7 Ashdown Close, Chandler's Ford, SO53 5QF

£475,000

A four bedroom detached family home situated in a popular cul de sac location within the heart of Hiltingbury and close to Hocombe Mead Nature Reserve. The property would benefit from some general updating and modernisation whilst providing four good size bedrooms sharing a family bathroom, 17'11" x 13'9" Sitting Room, 17'11" x 10'11" Kitchen/Dining Room and cloakroom. Externally, the property enjoys a wrap around garden along with detached garage and driveway providing off road parking. The property is offered for sale with no forward chain and sits within catchment for Hiltingbury and Thornden schools.

ACCOMMODATION

GROUND FLOOR

Entrance Hall:

Cloakroom:
4'11" x 3'5" (1.50m x 1.04m) Wash hand basin, WC.

Sitting Room:
17'11" x 13'9" (5.46m x 4.19m)

Kitchen/Dining Room:
17'11" x 10'11" max (5.46m x 3.33m max) Space for cooker, integrated extractor hood, plumbing for washing machine, breakfast bar, space for table and chairs, integrated fridge, integrated freezer.

FIRST FLOOR

Landing:
Access to loft space.

Bedroom 1:
11'10" x 10'11" (3.61m x 3.33m) Built in wardrobes along one wall.

Bedroom 2:
10'10" x 9'2" (3.30m x 2.79m)

Bedroom 3:
10'11" max x 8'4" (3.33m max 2.54m) Built in airing cupboard

Bedroom 4:
11'8" x 6'9" (3.56m x 2.06m)

Bathroom:
Comprising corner bath with shower over, wash hand basin, WC.

OUTSIDE

Front:
Mature planted bed, pathway to front door, side access to rear garden along both sides, driveway proving off road parking.

Rear Garden:

Measures approximately 60' x 57' max and comprises paved patio area extending to right hand side and rear with steps leading to further patio area, outside tap, area laid to lawn, garden shed. To the left hand side is a further garden area with mature plants, bushes and tress.

Garage:
17'1" x 8'7" (5.21m x 2.62m) With up and over door, power and light.

OTHER INFORMATION

Tenure:
Freehold

Approximate Age:
1970

Approximate Area:
103.6sqm/1116sqft

Sellers Position:
No forward chain

Heating:
Gas central heating

Windows:
UPVC double glazed windows

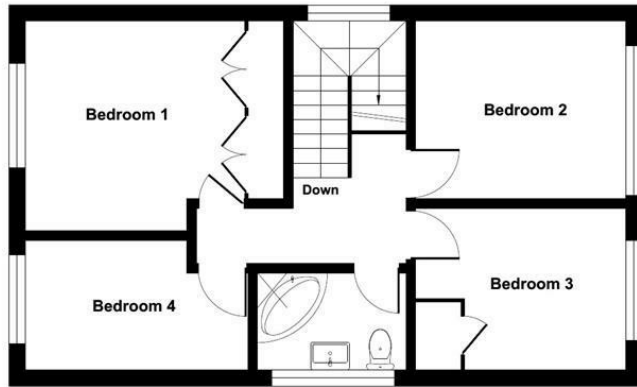
Infant/Junior School:
Hiltingbury Infant/Junior School

Secondary School:
Thornden Secondary School

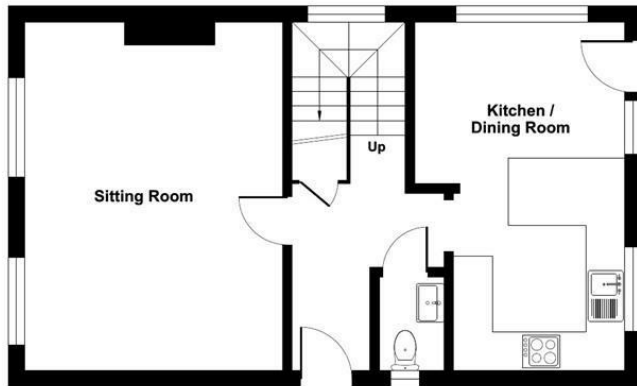
Council Tax:
Band E

Local Council:
Eastleigh Borough Council - 02380 688000

Ground Floor = 558 sq ft / 51.8 sq m
 First Floor = 558 sq ft / 51.8 sq m
 Total = 1116 sq ft / 103.6 sq m
 For identification only - Not to scale



FIRST FLOOR



GROUND FLOOR



Energy Efficiency Rating		Current	Potential
Very energy efficient - lower running costs			
(92 plus) A			
(81-91) B			82
(69-80) C		66	
(55-68) D			
(39-54) E			
(21-38) F			
(1-20) G			
Not energy efficient - higher running costs			
England & Wales		EU Directive 2002/91/EC	

Floor plan produced in accordance with RICS Property Measurement Standards incorporating International Property Measurement Standards (IPMS2 Residential). © richiecom 2024. Produced for Sparks Ellison. REF: 1102784

94 Winchester Road, Chandler's Ford, Hampshire, SO53 2GJ

Sales: t: 02380 255333 e: property@sparksellison.co.uk

Lettings: t: 02380 018518 e: lettings@sparksellison.co.uk



While we endeavour to make our sales particulars fair, accurate and reliable, they are only a general guide to the property and, accordingly, if there is any point which is of particular importance to you please contact the office and we will be pleased to check it for you, especially if you are contemplating travelling some distance to view the property. These approximate room sizes are only intended as general guidance. You must verify the dimensions carefully before ordering carpets or any built in furniture. Please note we have not tested the services or any of the equipment or appliances in this property, accordingly we strongly advise prospective buyers to commission their own survey or service report before finalising their offer to purchase. These particulars are issued in good faith but do not constitute representations of fact or form part of any offer or contract. The matters referred to in these particulars should be independently verified by prospective buyers or tenants. Neither Sparks Ellison nor any of its employees or agents has any authority to make or give any representation or warranty whatever in relation to this property. Your home is at risk if you do not keep up repayments on a mortgage or other loan secured on it. Written quotations available on request. All loans secured on property. Life assurance usually required.

