



18 Sycamore Avenue, Chandler's Ford, SO53 5RH

£550,000

Set within a plot of approximately 0.2 of an acre, affording a delightful rear garden measuring approximately 100' is this three bedroom detached bungalow offered for sale with no forward chain. The property affords a particularly spacious living room measuring 22'4" x 13' leading onto a conservatory overlooking the rear garden with a kitchen and three bedrooms, bathroom and cloakroom completing the accommodation. To the front and side is a good sized driveway providing plenty of off street parking leading to a garage measuring approximately 24'6" in length. Whilst the property is offered for sale in neat and tidy fashion it would benefit from updating and modernisation. Sycamore Avenue is conveniently placed within walking distance to local shops on Ashdown Road and Hiltingbury Road, together with Hiltingbury Schools and community centre. The centre of Chandlers Ford and Thornden School are a short distance away together with junction 12 of the M3.

ACCOMMODATION

Reception Hall:

Hatch to loft space, airing cupboard.

Sitting Room:

22'4" x 13' (6.81m x 3.96m) Electric fire, patio doors to conservatory.

Conservatory:

12'3" x 10' (3.73m x 3.05m) Glass roof, door to rear garden.

Kitchen:

11'2" x 8" (3.40m x 2.44m) Range of units, space and plumbing for appliances, boiler, door to rear garden.

Bedroom 1:

12'10" x 10' (3.91m x 3.05m) Two built in wardrobes.

Bedroom 2:

11'10" x 9'4" (3.61m x 2.84m) Built in wardrobe.

Bedroom 3:

9'10" x 9'4" (3.00m x 2.84m)

Bathroom:

Suite comprising bath with mixer tap and shower attachment, wash basin.

Cloakroom:

WC

OUTSDIE

Front:

To the front of the property is a good sized lawned area with well stocked flower and shrub borders, driveway to the side providing off street parking for several vehicles and side gate to rear garden.

Rear Garden:

A particularly attractive feature of the property affording a pleasant westerly

aspect measuring approximately 100' in length. The rear garden is landscaped with patio, large level lawn surrounded by well stocked borders and enclosed by fencing.

Garage:

24'6" x 9' (7.47m x 2.74m) Light and power.

OTHER INFORMATION

Tenure:

Freehold

Approximate Age:

1966

Approximate Area:

1084sqft/100.7sqm

Sellers Position:

No forward chain

Heating:

Gas central heating

Windows:

UPVC double glazing

Loft Space:

Infant/Junior School:

Hiltingbury Infant/Junior School

Secondary School:

Thornden Secondary School

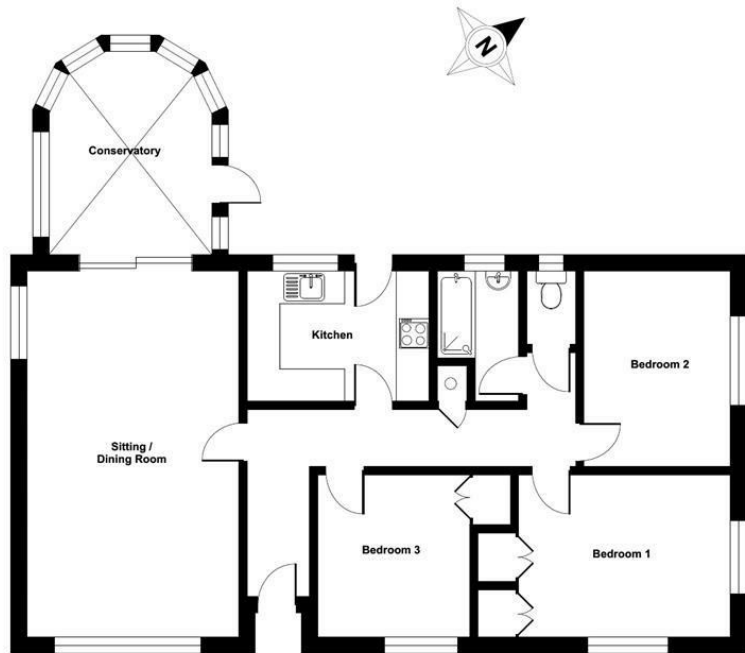
Local Council:

Eastleigh Borough Council - 02380 688000

Council Tax:

Band E

Ground Floor = 1084 sq ft / 100.7 sq m
For identification only - Not to scale



Energy Efficiency Rating		Current	Potential
Very energy efficient - lower running costs			
(92 plus) A			
(81-91) B			82
(69-80) C			
(55-68) D		53	
(39-54) E			
(21-38) F			
(1-20) G			
Not energy efficient - higher running costs			
England & Wales		EU Directive 2002/91/EC	

Floor plan produced in accordance with RICS Property Measurement Standards incorporating International Property Measurement Standards (IPMS2 Residential). © nrichcom 2024. Produced for Sparks Ellison. REF: 1115921

94 Winchester Road, Chandler's Ford, Hampshire, SO53 2GJ

Sales: t: 02380 255333 e: property@sparksellison.co.uk
Lettings: t: 02380 018518 e: lettings@sparksellison.co.uk

While we endeavour to make our sales particulars fair, accurate and reliable, they are only a general guide to the property and, accordingly, if there is any point which is of particular importance to you please contact the office and we will be pleased to check it for you, especially if you are contemplating travelling some distance to view the property. These approximate room sizes are only intended as general guidance. You must verify the dimensions carefully before ordering carpets or any built in furniture. Please note we have not tested the services or any of the equipment or appliances in this property, accordingly we strongly advise prospective buyers to commission their own survey or service report before finalising their offer to purchase. These particulars are issued in good faith but do not constitute representations of fact or form part of any offer or contract. The matters referred to in these particulars should be independently verified by prospective buyers or tenants. Neither Sparks Ellison nor any of its employees or agents has any authority to make or give any representation or warranty whatever in relation to this property. Your home is at risk if you do not keep up repayments on a mortgage or other loan secured on it. Written quotations available on request. All loans secured on property. Life assurance usually required.



