



35 Shaftesbury Avenue, Chandler's Ford, SO53 3BR

£425,000

A delightful 1920's detached chalet bungalow offered for sale with no forward chain. The accommodation is spread over two floors which affords flexibility in how it is used, whilst also providing enormous potential to extend further (subject to planning), improve and modernise. An outstanding feature of the property is the delightful rear garden which measures approximately 92' x 49' which also provides a useful outbuilding ideal for home working. Shaftesbury Avenue is conveniently situated to the southern side of Chandlers Ford and within easy reach of a range of shops on Bournemouth Road and the central precinct. Local schools include Fryern and Toynebee Schools, with the centre of Chandlers Ford also being a short distance away together with access to the M3 and M27 motorways.

ACCOMMODATION

Reception Hall:

14'1" x 7'6" (4.29m x 2.29m) Stairs to first floor, coats cupboard.

Living Room:

20'5" x 10'7" x 8'7" (6.22m x 3.23m x 2.62m) Double doors to conservatory.

Conservatory:

13'2" x 11' (4.01m x 3.35m) Tiled floor, radiator, glass roof, double doors to rear garden.

Kitchen/Breakfast Room:

15'3" x 12' (4.65m x 3.66m) Range of units, space and plumbing for appliances, tiled floor, boiler, door to rear lobby, door to outside.

Utility Room:

6'7" x 6' (2.01m x 1.83m) Space and plumbing for appliances, sink unit, tiled floor.

Bedroom 1:

11' x 10'6" (3.35m x 3.20m) Fitted wardrobes.

Bedroom 4/Snug:

13'6" x 13' (4.11m x 3.96m) Fireplace.

Shower Room:

Suite comprising shower in cubicle, wash basin, wc.

Cloakroom:

Suite comprising wash basin, wc.

First Floor

Landing:

Bedroom 2:

16'2" x 9'9" (4.93m x 2.97m) Fitted wardrobe, eaves storage access.

Bedroom 3:

10'10" x 9'9" (3.30m x 2.97m) Eaves storage access, open fronted fitted wardrobe.

OUTSIDE

Front:

To the front of the property is a driveway that extends alongside providing off street parking, adjacent planted area enclosed by hedging, side gate to rear garden.

Rear Garden:

A particularly outstanding feature of the property measuring approximately 92' x 49'. Adjoining the property is a patio leading onto lawned areas, surrounded by well stocked mature borders. The garden extends further to provide further planted borders and fruit trees together with garden shed and green house, hedging and fencing enclose the gardens.

Outbuilding:

The outbuilding consists of two separate rooms. Room 1: 11' x 8'6" (3.35m x 2.59m) Space and plumbing for appliances, sink unit, cupboards. Room 2: 8'8" x 8'6" (2.64m x 2.59m) Cloakroom: Wash basin, wc.

OTHER INFORMATION

Tenure:

Freehold

Approximate Age:

1920's

Approximate Area:

1504sqft/139.7sqm (Including limited use areas)

Sellers Position:

No forward chain

Heating:

Gas central heating

Windows:

UPVC double glazing

Infant/Junior School:

Fryern Infant/Junior School

Secondary School:

Toynebee Secondary School

Local Council:

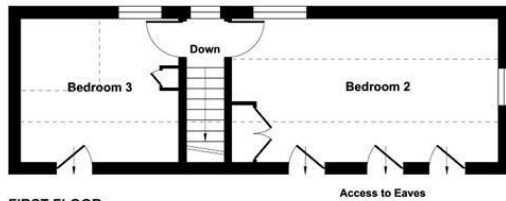
Eastleigh Borough Council - 02380 688000

Council Tax:

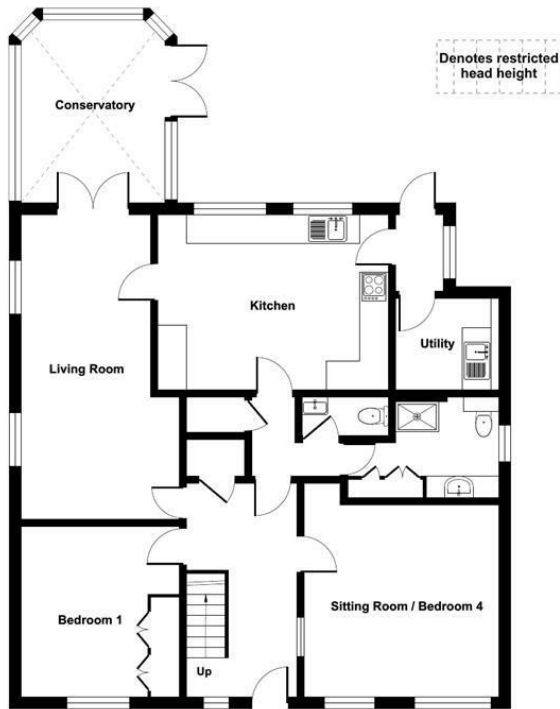
Band D



Ground Floor = 1183 sq ft / 109.9 sq m
 First Floor = 152 sq ft / 14.1 sq m
 Limited Use Area(s) = 169 sq ft / 15.7 sq m
 Total = 1504 sq ft / 139.7 sq m
 For identification only - Not to scale



FIRST FLOOR



GROUND FLOOR

Floor plan produced in accordance with RICS Property Measurement Standards incorporating International Property Measurement Standards (IPMS2 Residential). © richiecom 2024. Produced for Sparks Ellison. REF: 1124619



Energy Efficiency Rating		Current	Potential
Very energy efficient - lower running costs			
(92 plus) A			
(81-91) B			81
(69-80) C		61	
(55-68) D			
(39-54) E			
(21-38) F			
(1-20) G			
Not energy efficient - higher running costs			
England & Wales		EU Directive 2002/91/EC	

94 Winchester Road, Chandler's Ford, Hampshire, SO53 2GJ

Sales: t: 02380 255333 e: property@sparksellison.co.uk

Lettings: t: 02380 018518 e: lettings@sparksellison.co.uk

While we endeavour to make our sales particulars fair, accurate and reliable, they are only a general guide to the property and, accordingly, if there is any point which is of particular importance to you please contact the office and we will be pleased to check it for you, especially if you are contemplating travelling some distance to view the property. These approximate room sizes are only intended as general guidance. You must verify the dimensions carefully before ordering carpets or any built in furniture. Please note we have not tested the services or any of the equipment or appliances in this property, accordingly we strongly advise prospective buyers to commission their own survey or service report before finalising their offer to purchase. These particulars are issued in good faith but do not constitute representations of fact or form part of any offer or contract. The matters referred to in these particulars should be independently verified by prospective buyers or tenants. Neither Sparks Ellison nor any of its employees or agents has any authority to make or give any representation or warranty whatever in relation to this property. Your home is at risk if you do not keep up repayments on a mortgage or other loan secured on it. Written quotations available on request. All loans secured on property. Life assurance usually required.



