



31 Allbrook Hill, Eastleigh, SO50 4NA

£475,000

A magnificent double fronted Victorian semi-detached house presented to an exceptionally high standard throughout affording a host of wonderful attributes and features. The accommodation on the first floor affords two double bedrooms, two good sized single bedrooms and family bathroom. The central hallway on the ground floor leads to two main reception rooms at the front and to the rear a magnificent 34'8" kitchen/dining/living area. The gardens are simply stunning and to the rear provide a resin bonded driveway affording off street parking for several vehicles and a detached double garage. Pathways meander through well stocked borders with patio areas, decked areas, fruit and vegetable patches and a lawn. Allbrook Hill is conveniently placed for access to Junction 12 of the M3, the centre of Chandler's Ford, centre of Eastleigh, and city centres of Winchester and Southampton.

ACCOMMODATION

Ground Floor

Entrance Porch:

Tiled floor.

Reception Hall:

Oak and glass staircase with cupboard under, wooden floor.

Sitting Room:

14'4" x 14' (4.37m x 4.27m) Feature log burner, bay window, wooden floor.

Family Room:

14'5" x 13'10" (4.39m x 4.22m) Bay window, ornate fireplace, wooden floor.

Kitchen/Dining/Living Area:

34'8" x 8'10" (10.57m x 2.69m) The kitchen area is fitted with a comprehensive range of white gloss units with wooden worktops over, range style electric oven and gas hob with extractor hood over, space and plumbing for further appliances, open plan to dining area with space for table and chairs and double doors to rear garden. Open plan to sitting area with space for sofa, wooden floor throughout.

Rear Lobby:

Tiled floor, door to outside.

Cloakroom:

Wash basin, wc, tiled floor.

Utility Area:

Space and plumbing for appliances, tiled floor.

First Floor

Landing:

Hatch to loft space.

Bedroom 1:

12' x 11'9" (3.66m x 3.58m) Measurement up to range of wall to wall fitted wardrobes.

Bedroom 2:

12' x 11'6" (3.66m x 3.51m) Measurement up to range of wall to wall fitted wardrobes.

Bedroom 3:

10' x 8'11" (3.05m x 2.72m)

Bedroom 4:

10' x 8'9" (3.05m x 2.67m) Cupboard housing boiler.

Bathroom:

Re-fitted modern white suite comprising bath, separate shower cubicle, wash basin with storage under, wc, tiled floor.

OUTSIDE

The total plot extends to approximately 0.18 of an acre and represents a truly wonderful feature of the property.

Front:

To the front is an established planted bank with steps up to a pathway and front door. The remainder of the front garden is laid to pea shingle with established borders and side gate to rear garden and further planted borders.

Rear Garden:

Approximately 103' x 50'. Adjoining the property is a paved patio with steps up to decked areas, feature pond with waterfall and well stocked borders retained by rendered walls. A path meanders through the garden to a lawned area, further patio and sleeper edged and raised fruit and vegetable patches. A resin bonded driveway affords parking for several vehicles, two greenhouses, garden/potting shed.

Double Garage:

16'3" x 16' (4.95m x 4.88m) The garage is accessed from the rear of the property and a driveway that leads down to Allbrook Hill.

OTHER INFORMATION

Tenure:

Freehold

Approximate Age:

Late 1800's

Approximate Area:

1856sqft/172.4sqm

Sellers Position:

Looking for forward purchase

Heating:

Gas central heating

Windows:

UPVC double glazed windows

Loft Space:

Partially boarded with ladder and light connected

Infant/Junior School:

Otterbourne C of E School / Shakespeare Infant/Junior School

Secondary School:

Crestwood Community School

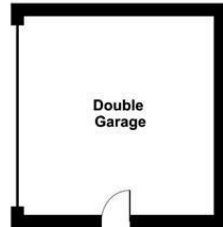
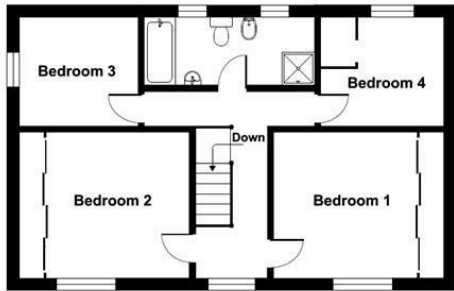
Council Tax:

Band D

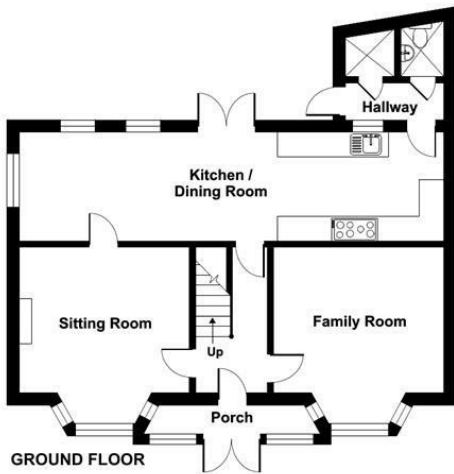
Local Council:

Eastleigh Borough Council - 02380 688000

Ground Floor = 876 sq ft / 81.3 sq m
 First Floor = 730 sq ft / 67.8 sq m
 Garage = 250 sq ft / 23.2 sq m
 Total = 1856 sq ft / 172.4 sq m
 For identification only - Not to scale



FIRST FLOOR



Energy Efficiency Rating		Current	Potential
Very energy efficient - lower running costs			
(92 plus) A			
(81-91) B			
(69-80) C		67	77
(55-68) D			
(39-54) E			
(21-38) F			
(1-20) G			
Not energy efficient - higher running costs			
England & Wales		EU Directive 2002/91/EC	

Certified Property Measurer
 Floor plan produced in accordance with RICS Property Measurement Standards incorporating International Property Measurement Standards (IPMS2 Residential). © nichicom 2024.
 Produced for Sparks Ellison. REF: 1147744

94 Winchester Road, Chandler's Ford, Hampshire, SO53 2GJ

Sales: t: 02380 255333 e: property@sparksellison.co.uk
 Lettings: t: 02380 018518 e: lettings@sparksellison.co.uk

While we endeavour to make our sales particulars fair, accurate and reliable, they are only a general guide to the property and, accordingly, if there is any point which is of particular importance to you please contact the office and we will be pleased to check it for you, especially if you are contemplating travelling some distance to view the property. These approximate room sizes are only intended as general guidance. You must verify the dimensions carefully before ordering carpets or any built in furniture. Please note we have not tested the services or any of the equipment or appliances in this property, accordingly we strongly advise prospective buyers to commission their own survey or service report before finalising their offer to purchase. These particulars are issued in good faith but do not constitute representations of fact or form part of any offer or contract. The matters referred to in these particulars should be independently verified by prospective buyers or tenants. Neither Sparks Ellison nor any of its employees or agents has any authority to make or give any representation or warranty whatever in relation to this property. Your home is at risk if you do not keep up repayments on a mortgage or other loan secured on it. Written quotations available on request. All loans secured on property. Life assurance usually required.



