



sparks ellison

203 Hursley Road, Chandler's Ford, SO53 1JN

£325,000

A well presented three bedroom home forming part of this popular small modern development on the edge of Hiltingbury constructed in approximately 2003. The property is conveniently placed within walking distance to Hiltingbury Schools, Hiltingbury Recreation Centre and Community Centre, together with shops on Hiltingbury Road and Ashdown Road. This delightful home also benefits from a downstairs cloakroom , good sized sitting room, spacious kitchen/dining room to the back of the property overlooking the rear garden, main bedroom with en-suite, two further bedrooms and family bathroom. There is also the benefit of a rear garden measuring approximately 35', allocated parking and no forward chain.

ACCOMMODATION

Ground Floor

Entrance Vestubile:

Cloakroom:
4'11" x 3'1" (1.50 x 0.94) White suite with chrome fitments comprising wash hand basin, w.c., tiled floor.

Sitting Room:
13'10" x 11'10" (4.22 x 3.61)

Inner Hall:
Stairs to first floor.

Kitchen/Dining Room:
15'4" x 9'5" (4.67 x 2.87) Range of built in units, integrated oven and gas hob with extractor hood over, space and plumbing for further appliances, space for table and chairs, cupboard housing boiler, tiled floor, double doors to rear garden.

First Floor

Landing:
Hatch to loft space.

Bedroom 1:
10'6" x 9'8" (3.20 x 2.95) Built in wardrobe and storage cupboards.

En-Suite:
8'6" x 4'8" (2.59 x 1.42) White suite with chrome fitments comprising shower in cubicle, wash hand basin with cupboard under, w.c., tiled floor, tiled walls.

Bedroom 2:
10'5" x 8'0" (3.18 x 2.44)

Bedroom 3:
7'2" x 7'0" (2.18 x 2.13)

Bathroom:
7'11" x 5'10" (2.41 x 1.78) White suite with chrome fitments comprising bath with shower attachment, wash hand basin, w.c, tiled floor.

OUTSIDE

Front:
Area laid to shingle, paving to front door.

Rear Garden:
35'0" x 16'0" (10.67 x 4.88) Comprising paved patio area, outside tap, area laid to lawn, garden shed, gate providing rear pedestrian access.

Parking:
There is one allocated parking space for No.203 situated in the car parking area to the front of the property.

OTHER INFORMATION

Tenure:
Freehold

Approximate Age:
2003

Approximate Area:
800sqft/74.2sqm

Sellers Postion:
No forward chain

Heating:
Gas central heating

Windows:
UPVC double glazing

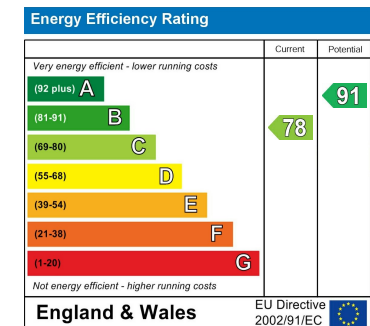
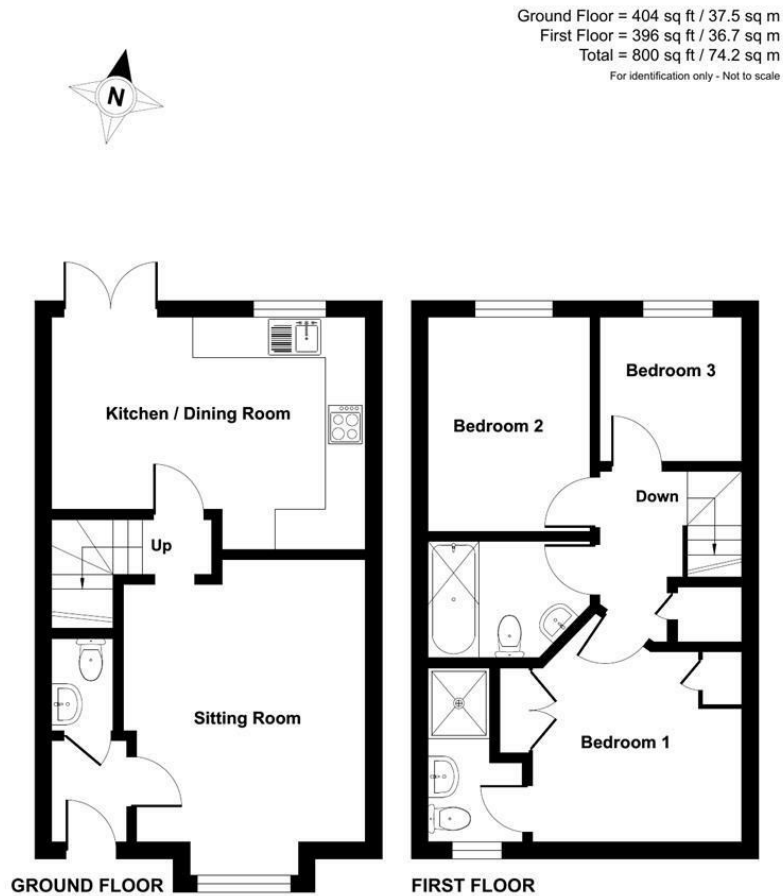
Loft Space:
Partially boarded with light connected

Infant/Junior School:
Hiltingbury Infant/Junior School

Secondary School:
Thornden Secondary School

Local Council:
Eastleigh Borough Council: 023 80 688000

Council Tax:
Band D



94 Winchester Road, Chandler's Ford, Hampshire, SO53 2GJ

Sales: t: 02380 255333 e: property@sparksellison.co.uk

Lettings: t: 02380 018518 e: lettings@sparksellison.co.uk

While we endeavour to make our sales particulars fair, accurate and reliable, they are only a general guide to the property and, accordingly, if there is any point which is of particular importance to you please contact the office and we will be pleased to check it for you, especially if you are contemplating travelling some distance to view the property. These approximate room sizes are only intended as general guidance. You must verify the dimensions carefully before ordering carpets or any built in furniture. Please note we have not tested the services or any of the equipment or appliances in this property, accordingly we strongly advise prospective buyers to commission their own survey or service report before finalising their offer to purchase. These particulars are issued in good faith but do not constitute representations of fact or form part of any offer or contract. The matters referred to in these particulars should be independently verified by prospective buyers or tenants. Neither Sparks Ellison nor any of its employees or agents has any authority to make or give any representation or warranty whatever in relation to this property. Your home is at risk if you do not keep up repayments on a mortgage or other loan secured on it. Written quotations available on request. All loans secured on property. Life assurance usually required.

