



sparks ellison

12 Brook Close, Chandler's Ford, SO53 3BT

£625,000

A delightful four bedroom detached home nestled in the corner of a quiet cul-de-sac on a prestigious development towards the southern end of Chandlers Ford. The property provides a number of notable attributes to include a welcoming and spacious reception hall leading to a sitting room overlooking the rear garden, separate dining room, third reception room which could serve as snug/study/family room and modern re-fitted kitchen/breakfast room, utility room and good size cloakroom and under stairs cupboard. On the first floor are four generous bedrooms, re-fitted en-suite shower room and renovated family bathroom. To the front of the property is a driveway affording extensive parking with stocked borders and a rear garden which is established and well planted providing a good degree of privacy along with a good size two tiered stone patio. Constructed in 2005 by renowned builders Kings Oak and forming part of a small and exclusive development of homes conveniently situated for access to the M3 and M27, centre of Chandler's Ford and neighbouring towns/cities of Southampton, Winchester and Eastleigh.

ACCOMMODATION

Ground Floor

Reception Hall:

Stairs to first floor with coat storage cupboard under.

Cloakroom:

Spacious and conveniently situated with white suite comprising wash basin and wc.

Sitting Room:

15'8" x 12' (4.78m x 3.66m) Double doors and pleasant view over the rear garden, feature fireplace with gas coal effect fire, double doors to hall and dining room.

Dining Room:

15'6" x 12'11" x 9' (4.72m x 3.94m x 2.74m) Rear garden aspect with access from hall and sitting room.

Study:

12'11" x 8'3" (3.94m x 2.51m) Third reception (Snug/family room/study)

Kitchen/Breakfast Room:

14'10" x 9'10" (4.52m x 3.00m) A comprehensive range of newly fitted shaker style units and granite worktops, island/breakfast bar with granite work top seating four, range style oven and hob with extractor hood over, integrated dishwasher, tiled floor.

Utility Room:

9'10 x 6'5" (3.00m x 1.96m) Range of matching units, incorporating space and plumbing for appliances and boiler, window and door to outside, tiled floor.

First Floor

Landing:

Hatch to loft space, airing cupboard.

Bedroom 1:

15'5" x 12' (4.70m x 3.66m) Walk in wardrobe with hanging, rail and shelving with rear gardens aspect.

En-Suite Shower Room:

6'7" x 5'6" (2.01m x 1.68m) Re-fitted modern white suite comprising corner shower cubicle with glazed screen, wash basin with storage under, wc, tiled floor.

Bedroom 2:

15'7" x 8'4" (4.75m x 2.54m) Rear garden aspect.

Bedroom 3:

13'2" x 10' (4.01m x 3.05m)

With Velux window and access to eaves storage.

Bedroom 4:

10' x 10' (3.05m x 3.05m) Excluding bay window with aspect to front of property.

Bathroom:

7'1" x 6'9" (2.16m x 2.06m) White suite comprising bath with mixer tap and separate shower unit over, glazed screen and tiled surround, wash basin with cupboard under, wc, tiled floor,

OUTSIDE

Front:

To the front of the property is a block paved drive and turning area providing off street parking for a number of vehicles, established well landscaped areas with a variety of mature shrubs and plants enclosed by new fencing. Covered area with front door to the property and garage.

Garage:

19'6" x 9'10" (5.94m x 3.00m) Light and power connected, door to rear garden.

Rear Garden:

Approximately 43' x 35' adjoining the property is a good sized stone patio leading onto a lawned area surrounded and enclosed by well stocked mature planting and recently replaced fencing enjoying a good degree of seclusion.

OTHER INFORMATION

Tenure:

Freehold

Approximate Age:

2005

Approximate Area:

1848sqft/171.7sqm (Including garage and limited space areas)

Sellers Position:

Looking for forward purchase

Heating:

Gas central heating

Windows:

UPVC double glazing

Loft Space:

Partially boarded with ladder and light connected

Infant/Junior School:

Fryern Infant/Junior School

Secondary School:

Toynbee Secondary School

Local Council:

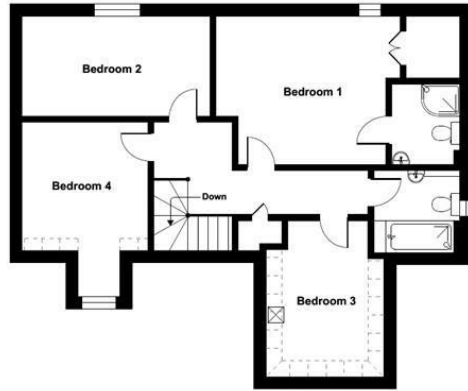
Eastleigh Borough Council 02380 688000

Council Tax:

Band E

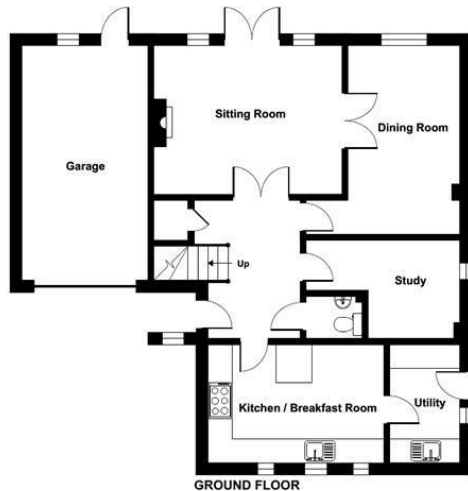


Ground Floor = 815 sq ft / 75.7 sq m
 First Floor = 787 sq ft / 73.1 sq m
 Garage = 204 sq ft / 19 sq m
 Limited Use Area(s) = 42 sq ft / 3.9 sq m
 Total = 1848 sq ft / 171.7 sq m
 For identification only - Not to scale



Denotes restricted head height

FIRST FLOOR



GROUND FLOOR



Energy Efficiency Rating		
	Current	Potential
Very energy efficient - lower running costs		
(92 plus) A		
(81-91) B		81
(69-80) C	71	
(55-68) D		
(39-54) E		
(21-38) F		
(1-20) G		
Not energy efficient - higher running costs		
England & Wales	EU Directive 2002/91/EC	

Floor plan produced in accordance with RICS Property Measurement Standards incorporating International Property Measurement Standards (IPMS2 Residential). © richiecom 2024. Produced for Sparks Ellison. REF: 1174568

94 Winchester Road, Chandler's Ford, Hampshire, SO53 2GJ

Sales: t: 02380 255333 e: property@sparksellison.co.uk

Lettings: t: 02380 018518 e: lettings@sparksellison.co.uk



While we endeavour to make our sales particulars fair, accurate and reliable, they are only a general guide to the property and, accordingly, if there is any point which is of particular importance to you please contact the office and we will be pleased to check it for you, especially if you are contemplating travelling some distance to view the property. These approximate room sizes are only intended as general guidance. You must verify the dimensions carefully before ordering carpets or any built in furniture. Please note we have not tested the services or any of the equipment or appliances in this property, accordingly we strongly advise prospective buyers to commission their own survey or service report before finalising their offer to purchase. These particulars are issued in good faith but do not constitute representations of fact or form part of any offer or contract. The matters referred to in these particulars should be independently verified by prospective buyers or tenants. Neither Sparks Ellison nor any of its employees or agents has any authority to make or give any representation or warranty whatever in relation to this property. Your home is at risk if you do not keep up repayments on a mortgage or other loan secured on it. Written quotations available on request. All loans secured on property. Life assurance usually required.

