



1 Walnut Close, Chandler's Ford, SO53 5RQ

£450,000

A semi-detached family home in a sought after and well established cul-de-sac in the heart of Hiltingbury offered For Sale with no forward chain and sitting within Hiltingbury and Thornden School catchments. The property has been altered on the first floor to provide four bedrooms that share a family bathroom. On the ground floor there is a large sitting/dining room that is complemented by a kitchen/breakfast room at the rear which leads into a conservatory. There is the added benefit of a ground floor cloakroom. There is an attractive 48' rear garden along with long driveway leading to a garage.

ACCOMMODATION

GROUND FLOOR

Entrance Hall:

Stairs to first floor.

Cloakroom:

5'1" x 3'4" (1.55m x 1.02m) Wash hand basin, WC.

Sitting/Dining Room:

18'3" max x 16' (5.56m max x 4.88m)

Kitchen/Breakfast Room:

15'1" x 12'2" (4.60m x 3.71m) Built in double oven, built in electric hob, fitted extractor hood, integrated fridge/freezer, integrated dishwasher, space and plumbing for washing machine, breakfast bar, under stairs storage cupboard, larder cupboard.

Conservatory:

10'8" x 7' (3.25m x 2.13m)

FIRST FLOOR

Landing:

Built in airing cupboard, access to loft space.

Bedroom 1:

11'9" x 10' (3.58m x 3.05m) Built in wardrobe with no door.

Bedroom 2:

10'3" x 6'11" (3.12m x 2.11m) Built in wardrobe.

Bedroom 3:

10'10" x 7'10" (3.30m x 2.39m)

Bedroom 4:

9'9" max x 7'10" (2.97m x 2.39m)

Bathroom:

8'1" x 5'8" (2.46m x 1.73m) Bath with shower over, wash hand basin and low level WC inset to vanity unit..

OUTSIDE

Front:

Area laid to lawn, driveway providing off road parking leading along side of the property providing access to rear garden.

Rear Garden:

Measures approximately 48' x 25' Outside tap, area laid to lawn, variety of mature plants and shrubs, area laid to timber deck, paved area.

Garage:

17'3" x 8'2" (5.26m x 2.49m) With up and over door, power and light.

OTHER INFORMATION

Tenure:

Freehold

Approximate Age:

1964

Approximate Area:

1190sqft/110.5sqm

Sellers Position:

No forward chain

Heating:

Gas central heating

Windows:

UPVC double glazed windows

Loft Space:

Partially boarded with light connected

Infant/Junior School:

Hiltingbury Infant/Junior School

Secondary School:

Thornden Secondary School

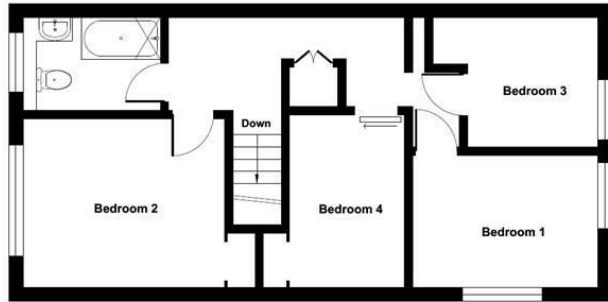
Council Tax:

Band D

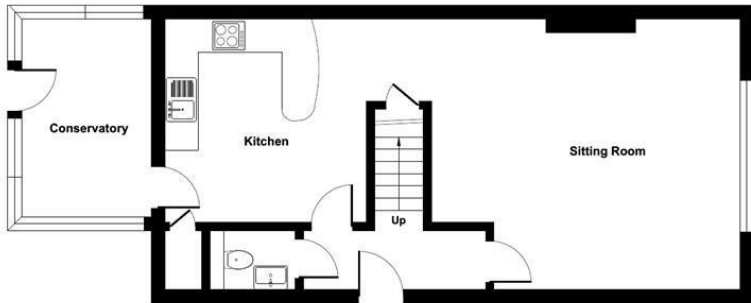
Local Council:

Eastleigh Borough Council - 02380 688000

Ground Floor = 645 sq ft / 59.9 sq m
 First Floor = 545 sq ft / 50.6 sq m
 Total = 1190 sq ft / 110.5 sq m
 For identification only - Not to scale



FIRST FLOOR



GROUND FLOOR



Energy Efficiency Rating		
	Current	Potential
Very energy efficient - lower running costs		
(92 plus) A		
(81-91) B		84
(69-80) C	70	
(55-68) D		
(39-54) E		
(21-38) F		
(1-20) G		
Not energy efficient - higher running costs		
England & Wales	EU Directive 2002/91/EC	

Floor plan produced in accordance with RICS Property Measurement Standards incorporating International Property Measurement Standards (IPMS2 Residential). © richiecom 2024. Produced for Sparks Ellison. REF: 1180010

94 Winchester Road, Chandler's Ford, Hampshire, SO53 2GJ

Sales: t: 02380 255333 e: property@sparksellison.co.uk
 Lettings: t: 02380 018518 e: lettings@sparksellison.co.uk

While we endeavour to make our sales particulars fair, accurate and reliable, they are only a general guide to the property and, accordingly, if there is any point which is of particular importance to you please contact the office and we will be pleased to check it for you, especially if you are contemplating travelling some distance to view the property. These approximate room sizes are only intended as general guidance. You must verify the dimensions carefully before ordering carpets or any built in furniture. Please note we have not tested the services or any of the equipment or appliances in this property, accordingly we strongly advise prospective buyers to commission their own survey or service report before finalising their offer to purchase. These particulars are issued in good faith but do not constitute representations of fact or form part of any offer or contract. The matters referred to in these particulars should be independently verified by prospective buyers or tenants. Neither Sparks Ellison nor any of its employees or agents has any authority to make or give any representation or warranty whatever in relation to this property. Your home is at risk if you do not keep up repayments on a mortgage or other loan secured on it. Written quotations available on request. All loans secured on property. Life assurance usually required.



