



sparks ellison

7 Maytree Road, Chandlers Ford, SO53 5RT

£600,000

A four bedroom detached family home situated in a popular location within the heart of Hiltingbury and benefitting from kitchen/breakfast room, sitting room, dining room and study area on the ground floor along with four bedrooms, en suite and bathroom on the first floor. Externally there is a good size driveway providing off road parking along with a garage and an impressive 93' rear garden. The property falls within catchment for Hiltingbury and Thornden Schools and is offered for sale with no forward chain.

ACCOMMODATION

GROUND FLOOR

Entrance Hall:

Stairs to first floor, under stairs storage cupboard.

Cloakroom:

5'7" x 2'11" (1.70m x 0.89m) White suite with chrome fittings comprising wash hand basin, w.c.

Sitting Room:

17'7" x 12'11" (5.36m x 3.94m) Fireplace surround and hearth with inset electric fire.

Dining Room:

11'1" x 9'5" (3.38m x 2.87m)

Study Area:

10'2" x 8' max (3.10m x 2.44m max)

Kitchen/Breakfast Room:

12'11" x 10'11" (3.94m x 3.33m) Built in double oven, built in four ring gas hob, fitted extractor hood, integrated fridge freezer, space and plumbing for dishwasher, fitted breakfast bar, wall mounted boiler.

Utility Room:

6'8" x 3' (2.03m x 0.91m) Space and plumbing for washing machine,

First Floor

Landing:

Bedroom 1:

13' x 10'11" (3.96m x 3.33m)

En-Suite:

5'6" max x 4'8" max (1.68m max x 1.42m max) White suite with chrome fittings comprising shower in cubicle, wash hand basin, w.c.

Bedroom 2:

13' max x 10'9" max (3.96m max x 3.28m max)

Bedroom 3:

9'9" x 9'4" (2.97m x 2.84m)

Bedroom 4:

10'2" x 7'5" (3.10m x 2.26m)

Bathroom:

6'4" x 6'2" plus recess to door (1.93m x 1.88m plus recess to door) White suite with chrome fittings comprising bath with shower over, wash hand basin, w.c.

OUTSIDE

Front:

Area laid to lawn with mature tree, outside tap, driveway providing off road parking for several vehicles and providing access along side of the property to the rear garden.

Rear Garden:

Measures approximately 93' from sitting room x 35' and comprises paved patio area, area laid to lawn, area laid to bark, planted beds, mature trees, garden shed with power and light.

Garage:

19'8" x 9'4" (5.99m x 2.84m) With up and over door, power and light.

OTHER INFORMATION

Tenure:

Freehold

Approximate Age:

1960

Approximate Area:

129sqm/1308sqft

Sellers Position:

No forward chain

Heating:

Gas central heating

Windows:

UPVC double glazing

Infant/Junior School:

Hiltingbury Infant/Junior School

Secondary School:

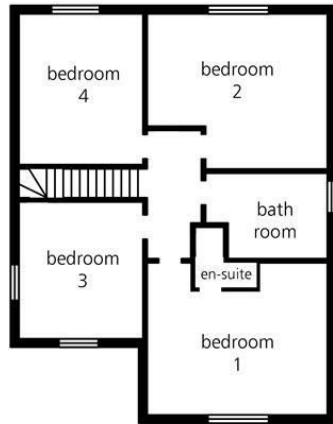
Thornden Secondary School

Local Council:

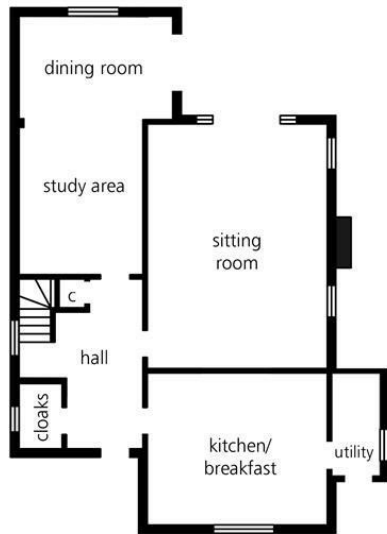
Eastleigh Borough Council - 02380 688000

Council Tax:

Band E



first floor plan



ground floor plan

illustrative purposes only



Energy Efficiency Rating		
	Current	Potential
Very energy efficient - lower running costs		
(92 plus) A		
(81-91) B		78
(69-80) C	65	
(55-68) D		
(39-54) E		
(21-38) F		
(1-20) G		
Not energy efficient - higher running costs		
England & Wales	EU Directive 2002/91/EC	

94 Winchester Road, Chandler's Ford, Hampshire, SO53 2GJ

Sales: t: 02380 255333 e: property@sparksellison.co.uk

Lettings: t: 02380 018518 e: lettings@sparksellison.co.uk

While we endeavour to make our sales particulars fair, accurate and reliable, they are only a general guide to the property and, accordingly, if there is any point which is of particular importance to you please contact the office and we will be pleased to check it for you, especially if you are contemplating travelling some distance to view the property. These approximate room sizes are only intended as general guidance. You must verify the dimensions carefully before ordering carpets or any built in furniture. Please note we have not tested the services or any of the equipment or appliances in this property, accordingly we strongly advise prospective buyers to commission their own survey or service report before finalising their offer to purchase. These particulars are issued in good faith but do not constitute representations of fact or form part of any offer or contract. The matters referred to in these particulars should be independently verified by prospective buyers or tenants. Neither Sparks Ellison nor any of its employees or agents has any authority to make or give any representation or warranty whatever in relation to this property. Your home is at risk if you do not keep up repayments on a mortgage or other loan secured on it. Written quotations available on request. All loans secured on property. Life assurance usually required.



