



sparks ellison  
For Sale

# 1 The Deanery, Chandler's Ford, SO53 1TL

£475,000

A three bedroom detached home situated on the popular North Millers Dale development which itself benefits from a gastro pub, woodland walks through Flexford nature reserve and falls within the catchment for the popular Hiltingbury and Thornden Schools. On the ground floor the property affords a central hallway leading to the triple aspect sitting room and kitchen/dining room with double doors to rear garden and on the first floor, three bedrooms and family bathroom. To the side of the property is a driveway leading to the single detached garage and to the rear a delightful garden measuring approximately 51' x 38' affording a pleasant southerly aspect.

## ACCOMMODATION

### Ground Floor

#### Entrance Hall:

Stairs to first floor with cupboard under.

#### Cloakroom:

Wash basin with cupboard under, wc, tiled floor.

#### Sitting Room:

19'4" x 11' (5.89m x 3.35m) Feature gas fireplace, double doors to rear garden, triple aspect windows.

#### Kitchen/Dining Room:

16'3" x 9'10" (4.95m x 3.00m) Range of units, electric oven and gas hob with extractor hood over, integrated dishwasher, space for fridge/freezer, space for table and chairs, double doors to rear garden.

### First Floor

#### Landing:

Hatch to loft space, cupboard housing boiler.

#### Bedroom 1:

11' x 9'8" (3.35m x 2.95m) Two built in double wardrobes.

#### Bedroom 2:

10'2" x 9'11" (3.10m x 3.02m)

#### Bedroom 3:

11' x 7' (3.35m x 2.13m)

#### Bathroom:

9'9" x 5'8" (2.97m x 1.73m) White suite comprising P shaped bath with shower over, wash basin with cupboard under, wc, tiled walls.

## OUTSIDE

### Front:

To the front of the property is a good sized lawned area with planted borders and pathway to front door. To the side is a block paved driveway leading to the garage, side gate and path to rear garden.

### Rear Garden:

A particularly attractive feature of the property measuring approximately 51' x 38' enjoying a pleasant southerly aspect. Patio area, lawned area enclosed by well stocked borders and hedging.

### Workshop:

10'5" x 8'4" (3.18m x 2.54m) light and power, door to rear garden.

### Storage Room:

8'7" x 6'5" (2.62m x 1.96m) Space and plumbing for washing machine, light and power (please note that the workshop and the storage room have been created from the original garage).

## OTHER INFORMATION

### Tenure:

Freehold

### Approximate Age:

Constructed Circa 1980

### Approximate Area:

88.2sqm/950sqft

### Sellers Position:

Looking for forward purchase

### Heating:

Gas central heating

### Windows:

UPVC double glazing

### Loft Space:

Partially boarded with light connected

### infant/Junior School:

Hiltingbury Infant/Junior School

### Secondary School:

Thornden Secondary School

### Local Council:

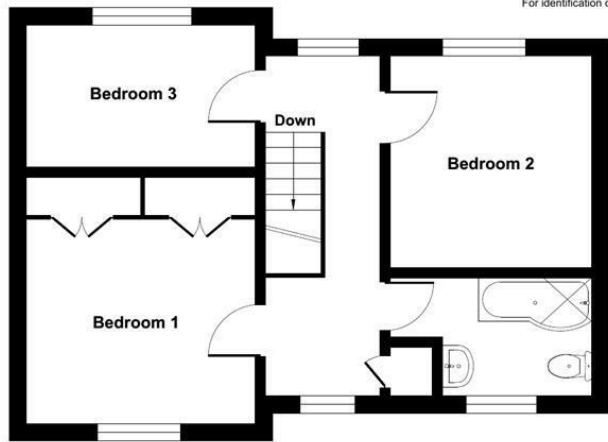
Eastleigh Borough Council - 02380 688000

### Council Tax:

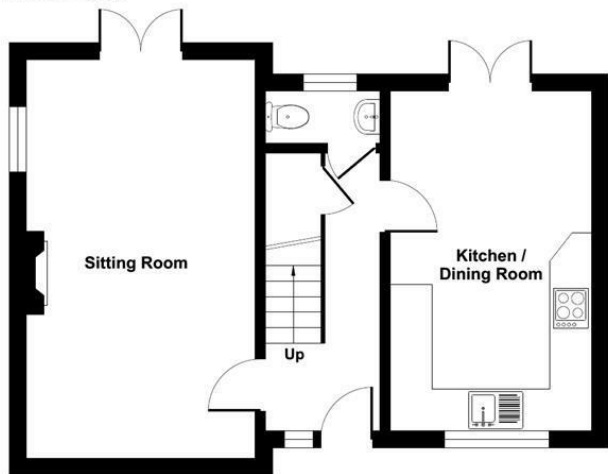
Band D



Ground Floor = 475 sq ft / 44.1 sq m  
 First Floor = 475 sq ft / 44.1 sq m  
 Total = 950 sq ft / 88.2 sq m  
 For identification only - Not to scale



FIRST FLOOR



GROUND FLOOR



Energy Efficiency Rating		
	Current	Potential
Very energy efficient - lower running costs		
(92 plus) <b>A</b>		
(81-91) <b>B</b>		
(69-80) <b>C</b>		
(55-68) <b>D</b>		
(39-54) <b>E</b>		
(21-38) <b>F</b>		
(1-20) <b>G</b>		
Not energy efficient - higher running costs		
<b>England &amp; Wales</b>	73	86
	EU Directive 2002/91/EC	

Floor plan produced in accordance with RICS Property Measurement 2nd Edition, Incorporating International Property Measurement Standards (IPMS2 Residential). © ritchcom 2024. Produced for Sparks Ellison. REF: 1217070

94 Winchester Road, Chandler's Ford, Hampshire, SO53 2GJ

Sales: t: 02380 255333 e: [property@sparksellison.co.uk](mailto:property@sparksellison.co.uk)

Lettings: t: 02380 018518 e: [lettings@sparksellison.co.uk](mailto:lettings@sparksellison.co.uk)

While we endeavour to make our sales particulars fair, accurate and reliable, they are only a general guide to the property and, accordingly, if there is any point which is of particular importance to you please contact the office and we will be pleased to check it for you, especially if you are contemplating travelling some distance to view the property. These approximate room sizes are only intended as general guidance. You must verify the dimensions carefully before ordering carpets or any built in furniture. Please note we have not tested the services or any of the equipment or appliances in this property, accordingly we strongly advise prospective buyers to commission their own survey or service report before finalising their offer to purchase. These particulars are issued in good faith but do not constitute representations of fact or form part of any offer or contract. The matters referred to in these particulars should be independently verified by prospective buyers or tenants. Neither Sparks Ellison nor any of its employees or agents has any authority to make or give any representation or warranty whatever in relation to this property. Your home is at risk if you do not keep up repayments on a mortgage or other loan secured on it. Written quotations available on request. All loans secured on property. Life assurance usually required.



