



sparks ellison

14 Fairbairn Walk, Chandler's Ford, SO53 4HT

£310,000

Located in the desirable Knightwood Park area of Chandler's Ford, this modern terraced house on Fairbairn Walk presents an excellent opportunity for those seeking a comfortable and convenient home. With no forward chain, this property is ready for you to move in and make it your own. The house boasts two well-proportioned bedrooms, making it ideal for small families, couples, or even as a rental investment. The two bathrooms provide added convenience, ensuring that morning routines run smoothly. The heart of the home is the re-fitted kitchen, which combines style and functionality, perfect for those who enjoy cooking and entertaining. The property features a welcoming reception room that offers a versatile space for relaxation or social gatherings. Additionally, the driveway accommodates parking for two vehicles, and the garage is a valuable asset in this sought-after location. Living here means you are conveniently situated near Knightwood School, making it an excellent choice for families with children. The nearby leisure centre offers a range of activities for all ages, while the surrounding woodland walks provide a peaceful escape into nature. For everyday needs, the shops at Pilgrims Close are just a short distance away, ensuring that all amenities are within easy reach. This modern two-bedroom home is a fantastic find in a vibrant community, offering both comfort and convenience. Don't miss the chance to view this property and discover all it has to offer.

ACCOMMODATION:

Ground Floor:

Entrance Hall:

Stairs to first floor, under stairs storage cupboard.

Kitchen:

10'1" x 6'1" (3.07m x 1.85m) Range of units, built in oven, built in gas hob, fitted extractor hood, integrated dishwasher, plumbing for washing machine, space for fridge freezer, boiler in cupboard.

Sitting/Dining Room:

17'3" x 11'11" (5.26m x 3.63m)

First Floor:

Landing:

Bedroom 1:

10' to wardrobes x 8'8" plus door recess (3.05m x 2.64m) Fitted wardrobes along one wall.

En Suite:

White suite with chrome fitments comprising shower in cubicle, wash hand basin, WC.

Bedroom 2:

8'8" x 8'6" (2.64m x 2.59m) Built in airing cupboard housing hot water tank, built in wardrobe.

Bathroom:

6'9" x 5'7" (2.06m x 1.70m) White suite with chrome fitments comprising bath with shower attachment, wash hand basin, WC.

OUTSIDE:

Front:

Area laid to pebbles, pathway to front door.

Rear Garden:

Measures approximately 34' x 12' and comprises paved patio area, area laid to lawn, gate proving rear pedestrian access.

Garage:

With up and over door and parking space in front.

OTHER INFORMATION

Tenure:

Freehold

Approximate Age:

1999

Approximate Area:

64sqm/689sqft (Details taken from EPC)

Sellers Position:

No forward chain

Heating:

Gas central heating

Windows:

UPVC double glazing

Infant/Junior School:

Knightwood Primary School/St Francis C of E Primary School

Secondary School:

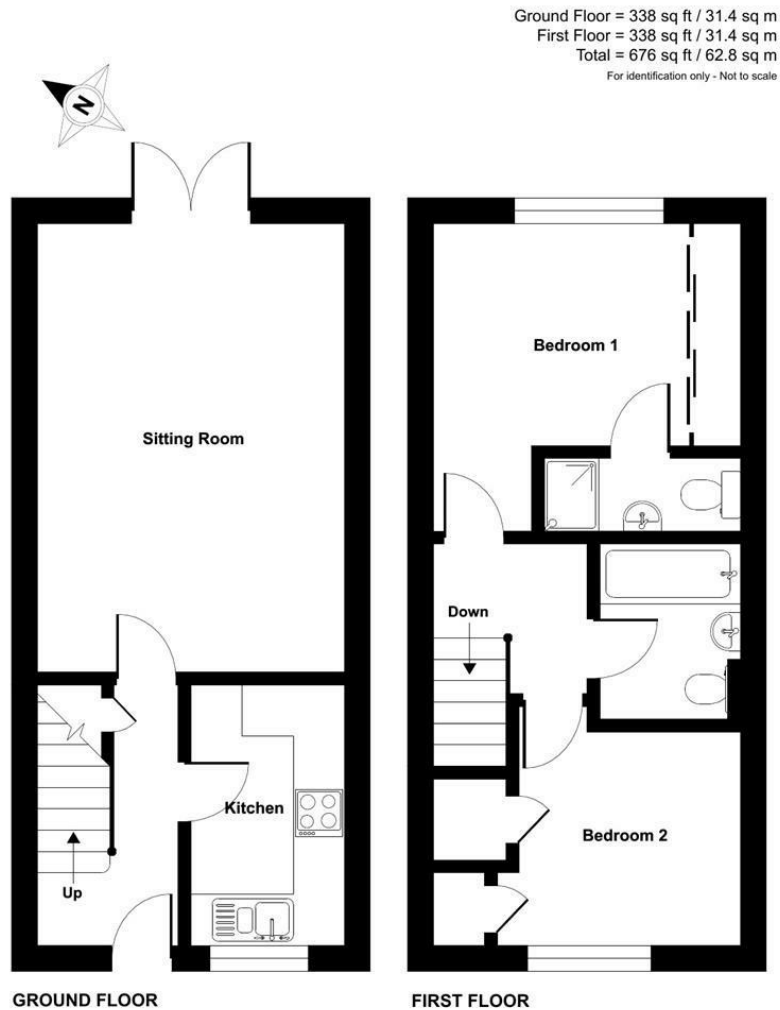
Thornden Secondary School

Local Council:

Test Valley Borough Council 01264 368000

Council Tax:

Band C



Floor plan produced in accordance with RICS Property Measurement Standards incorporating International Property Measurement Standards (IPMS2 Residential). © nichicom 2024. Produced for Sparks Ellison. REF: 1087614



Energy Efficiency Rating		
	Current	Potential
Very energy efficient - lower running costs		
(92 plus) A		89
(81-91) B		
(69-80) C	71	
(55-68) D		
(39-54) E		
(21-38) F		
(1-20) G		
Not energy efficient - higher running costs		
England & Wales		EU Directive 2002/91/EC

94 Winchester Road, Chandler's Ford, Hampshire, SO53 2GJ

Sales: t: 02380 255333 e: property@sparksellison.co.uk

Lettings: t: 02380 018518 e: lettings@sparksellison.co.uk

While we endeavour to make our sales particulars fair, accurate and reliable, they are only a general guide to the property and, accordingly, if there is any point which is of particular importance to you please contact the office and we will be pleased to check it for you, especially if you are contemplating travelling some distance to view the property. These approximate room sizes are only intended as general guidance. You must verify the dimensions carefully before ordering carpets or any built in furniture. Please note we have not tested the services or any of the equipment or appliances in this property, accordingly we strongly advise prospective buyers to commission their own survey or service report before finalising their offer to purchase. These particulars are issued in good faith but do not constitute representations of fact or form part of any offer or contract. The matters referred to in these particulars should be independently verified by prospective buyers or tenants. Neither Sparks Ellison nor any of its employees or agents has any authority to make or give any representation or warranty whatever in relation to this property. Your home is at risk if you do not keep up repayments on a mortgage or other loan secured on it. Written quotations available on request. All loans secured on property. Life assurance usually required.

