



sparks ellison

75 Sycamore Avenue, Chandler's Ford, SO53 5RG

£300,000

Situated on the popular Sycamore Avenue in Chandler's Ford, this spacious three bedroom semi detached house presents an excellent opportunity for buyers looking to create their ideal home. The property benefits from a generous sitting room, enhanced by a side extension that provides versatile additional space, ideal as a dining area, study, or family room. This flexibility is sure to appeal to a wide range of buyers. Upstairs, there are three well proportioned bedrooms, all offering comfortable accommodation, along with a neat family bathroom serving the first floor. Outside, the property benefits from a garage and parking to the rear, providing practical off road parking. While the home would benefit from modernisation throughout, it offers fantastic potential for a purchaser to update and personalise to their own taste, creating a wonderful long term family home. Situated within Hiltingbury & Thornden School Catchment as well as being nearby to Woodland Walks such as Hiltingbury Lakes and Hocombe Mead. Easy access can also be gained onto the M3 & M27.

ACCOMMODATION

Ground Floor

Entrance Lobby:

Sitting Room:

18'3" x 13'6" (5.55m x 4.12m) Stairs to first floor. Double doors to Kitchen, open to Dining Room.

Dining Room:

11'9" x 5'5" (3.58m x 1.64m)

Kitchen:

11'9" x 10'3" (3.59m x 3.12m) Range of fitted units with plumbing for washing machine, sink with drainer, wall mounted boiler, gas hob, double oven, space for fridge freezer.

Lobby:

Door to rear garden. Door to Cloakroom.

Cloakroom:

WC

First Floor:

Bedroom 1:

13'6" x 10'0" (4.12m x 3.05m)

Bedroom 2:

10'3" x 9'11" (3.13m x 3.03m) Double built in wardrobes.

Bedroom 3:

9'0" x 7'9" (2.75m x 2.37m)

Bathroom:

Bath with shower over, WC, wash habd basin with cupboard under, tiled walls.

OUTSIDE:

Front:

Lawned area and steps to front door.

Rear Garden:

Patio area and lawn, storage shed. Gate to rear and enclosed by brick wall and metal fencing. East facing and measuring approx. 22 ft x 20ft max

Garage:

19'0" x 7'1" (5.79m x 2.16m) Located at the rear with up and over door.

OTHER INFORMATION:

Tenure:

Freehold

Approximate Age:

1964

Approximate Area:

1119 sq ft / 103.8 sq m (including garage)

Sellers Position:

No forward chain

Heating:

Gas central heating

Windows:

UPVC double glazing

Loft Space:

Fully boarded with ladder and light connected

Infant/Junior School:

Hiltingbury Infant School / Hiltingbury Junior School

Secondary School:

Thornden School

Local Council:

Eastleigh Borough Council - 02380 688000

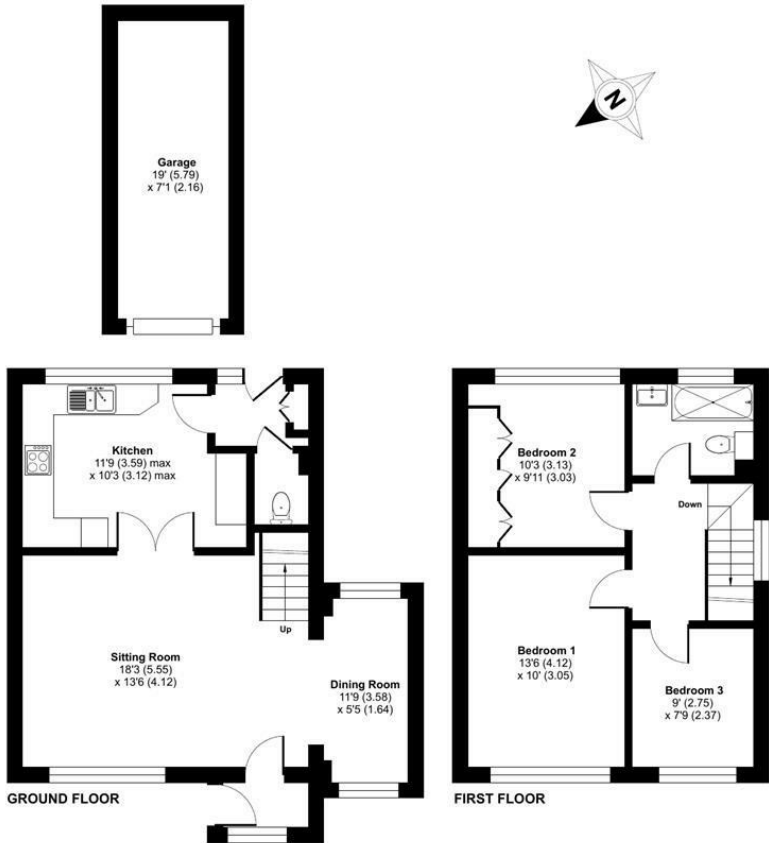
Council Tax:

Band D

Agents Note:

If you have an offer accepted on a property we will need to, by law, conduct Anti Money Laundering Checks. There is a charge of £60 including vat for these checks regardless of the number of buyers involved.

Ground Floor = 540 sq ft / 50.1 sq m
 First Floor = 444 sq ft / 41.2 sq m
 Garage = 135 sq ft / 12.5 sq m
 Total = 1119 sq ft / 103.8 sq m
 For identification only - Not to scale



Energy Efficiency Rating		Current	Potential
Very energy efficient - lower running costs			
(92 plus) A			
(81-91) B			
(69-80) C			
(55-68) D			
(39-54) E			
(21-38) F			
(1-20) G			
Not energy efficient - higher running costs			
England & Wales		EU Directive 2002/91/EC	

Floor plan produced in accordance with RICS Property Measurement 2nd Edition, Incorporating International Property Measurement Standards (IPMS2 Residential). © ritchicom 2026. Produced for Sparks Ellison. REF: 1453085

94 Winchester Road, Chandler's Ford, Hampshire, SO53 2GJ

Sales: t: 02380 255333 e: property@sparksellison.co.uk
 Lettings: t: 02380 018518 e: lettings@sparksellison.co.uk

While we endeavour to make our sales particulars fair, accurate and reliable, they are only a general guide to the property and, accordingly, if there is any point which is of particular importance to you please contact the office and we will be pleased to check it for you, especially if you are contemplating travelling some distance to view the property. These approximate room sizes are only intended as general guidance. You must verify the dimensions carefully before ordering carpets or any built in furniture. Please note we have not tested the services or any of the equipment or appliances in this property, accordingly we strongly advise prospective buyers to commission their own survey or service report before finalising their offer to purchase. These particulars are issued in good faith but do not constitute representations of fact or form part of any offer or contract. The matters referred to in these particulars should be independently verified by prospective buyers or tenants. Neither Sparks Ellison nor any of its employees or agents has any authority to make or give any representation or warranty whatever in relation to this property. Your home is at risk if you do not keep up repayments on a mortgage or other loan secured on it. Written quotations available on request. All loans secured on property. Life assurance usually required.



