



1 Carthage Close, Chandler's Ford, SO53 2BL

£425,000

Located in the highly sought-after Scantabout area of Chandler's Ford, this attractive neo-Georgian end terrace house on Carthage Close offers a delightful blend of style and convenience. Built in circa 1970, the property boasts a charming façade and is ideally situated within walking distance of esteemed local schools, including Scantabout and Thornden, as well as the vibrant centre of Chandler's Ford. Excellent transport links to Winchester and Southampton are also readily accessible. Inside, the home features a welcoming reception room that provides a perfect space for relaxation and entertaining. The property comprises three well-proportioned bedrooms, each equipped with built-in wardrobes, ensuring ample storage. The kitchen and bathroom have been thoughtfully refitted, presenting modern amenities while maintaining the character of the home. One of the standout features of this property is the approximately 55' rear garden, which enjoys a westerly aspect, making it an ideal spot for afternoon and evening sun and outdoor gatherings. The pleasant views over the green to the front enhance the tranquil atmosphere of the home. For those with vehicles, the property includes a driveway that accommodates several cars, along with a garage for additional storage or parking needs. With no forward chain, this home is ready for its new owners to move in and make it their own. This property is a rare find in a desirable area, making it an excellent opportunity for families and professionals alike.

ACCOMMODATION

Ground Floor

Reception Hall:

Wooden floor, stairs to first floor with cupboard under.

Cloakroom:

Modern refitted suite comprising wash basin with cupboard under, WC, tiled walls and floor.

Sitting Room:

16'6" x 10'6" (5.02m x 3.19m) Bay window overlooking the green, fireplace with electric fire, wooden floor.

Kitchen/Dining Room:

17'3" x 7'11" (5.27m x 2.42m) Refitted range of cream gloss units, electric double oven, gas hob with extractor hood over, space and plumbing for further appliances, space for table and chairs, wooden floor, door to rear garden.

First Floor

Landing:

Hatch to loft space, storage cupboard.

Bedroom 1:

11'9" x 10'0" (3.59m x 3.05m) Built in wardrobe.

Bedroom 2:

10'0" x 8'7" (3.05m x 2.62m) Built in wardrobe.

Bedroom 3:

8'9" x 6'11" (2.66m x 2.12m) Built in wardrobe.

Bathroom:

Refitted suite comprising bath with mixer tap, separate shower unit over and glazed screen, wash basin with cupboard under, WC, tiled walls and floor.

OUTSIDE

Front:

To the front of the property is a gravel driveway which extends to the side providing off street parking for several vehicles, side access to rear garden.

Rear Garden:

The rear garden is an attractive feature of the property measuring approximately 55 ft in length affording a

pleasant westerly aspect, two main patio areas ideal for outside entertaining, lawned area, enclosed by fencing.

Garage:

17'8" x 8'4" (5.39m x 2.54m) Light and power.

OTHER INFORMATION

Tenure:

Freehold

Approximate Age:

1970

Approximate Area:

950 sq ft / 88.1 sq m (including garage)

Sellers Position:

No forward chain

Heating:

Gas central heating

Windows:

UPVC double glazing

Loft Space:

Partially boarded with ladder and light connected

Infant/Junior School:

Scantabout Primary School

Secondary School:

Thornden School

Local Council:

Eastleigh Borough Council - 02380 688000

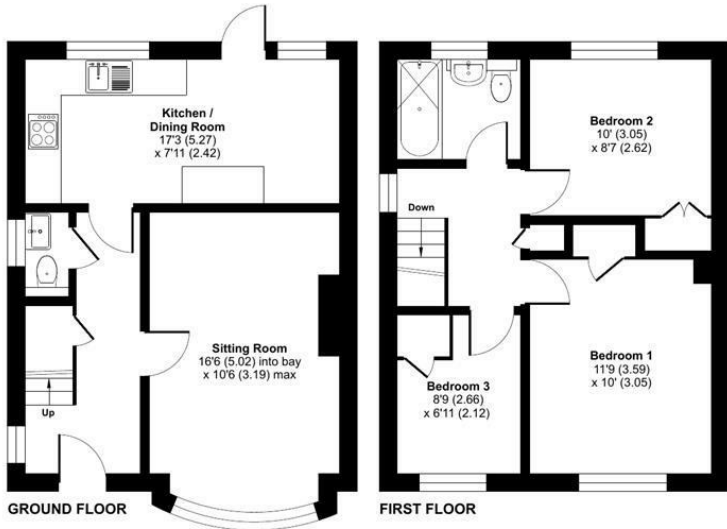
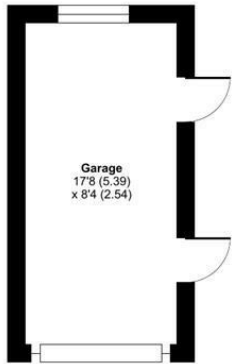
Council Tax:

Band D

Agents Note:

If you have an offer accepted on a property we will need to, by law, conduct Anti Money Laundering Checks. There is a charge of £60 including vat for these checks regardless of the number of buyers involved.

Ground Floor = 409 sq ft / 37.9 sq m
 First Floor = 394 sq ft / 36.6 sq m
 Garage = 147 sq ft / 13.6 sq m
 Total = 950 sq ft / 88.1 sq m
 For identification only - Not to scale



Energy Efficiency Rating		Current	Potential
Very energy efficient - lower running costs			
(92 plus) A			
(81-91) B			85
(69-80) C			
(55-68) D		67	
(39-54) E			
(21-38) F			
(1-20) G			
Not energy efficient - higher running costs			
England & Wales		EU Directive 2002/91/EC	

Floor plan produced in accordance with RICS Property Measurement 2nd Edition, Incorporating International Property Measurement Standards (IPMS2 Residential). © ritchecom 2026. Produced for Sparks Ellison. REF: 1472873.

94 Winchester Road, Chandler's Ford, Hampshire, SO53 2GJ

Sales: t: 02380 255333 e: property@sparksellison.co.uk
 Lettings: t: 02380 018518 e: lettings@sparksellison.co.uk

While we endeavour to make our sales particulars fair, accurate and reliable, they are only a general guide to the property and, accordingly, if there is any point which is of particular importance to you please contact the office and we will be pleased to check it for you, especially if you are contemplating travelling some distance to view the property. These approximate room sizes are only intended as general guidance. You must verify the dimensions carefully before ordering carpets or any built in furniture. Please note we have not tested the services or any of the equipment or appliances in this property, accordingly we strongly advise prospective buyers to commission their own survey or service report before finalising their offer to purchase. These particulars are issued in good faith but do not constitute representations of fact or form part of any offer or contract. The matters referred to in these particulars should be independently verified by prospective buyers or tenants. Neither Sparks Ellison nor any of its employees or agents has any authority to make or give any representation or warranty whatever in relation to this property. Your home is at risk if you do not keep up repayments on a mortgage or other loan secured on it. Written quotations available on request. All loans secured on property. Life assurance usually required.



