



sparks ellison

9 Chestnut Close, Chandler's Ford, SO53 3HH

£675,000

Situated within the tranquil cul-de-sac in Chestnut Close, Chandler's Ford, this impressive four bedroom detached home offers an excellent blend of space, comfort and privacy. The welcoming entrance hall leads into the heart of the home, where you will find a well proportioned study, ideal for those working from home. The kitchen is both practical and inviting, offering ample storage and workspace, while the separate dining room provides an excellent setting for family meals and entertaining. The spacious sitting room serves as a comfortable retreat, perfect for relaxation and everyday living. Upstairs, there are four well proportioned bedrooms, served by a family bathroom and an en-suite to the principal bedroom, ensuring comfort and convenience for the whole family. Externally, the property benefits from a substantial driveway providing parking for five to six vehicles. A detached home office adds further versatility and could equally be used as a gym, games room or additional study space. The south facing rear garden is a particular highlight, offering a private outdoor space that is not overlooked, making it ideal for relaxing, entertaining or enjoying time with family and friends. Positioned within walking distance to local amenities such as The Village Gym as well as Asda supermarket. Chestnut Close is also a short distance from the centre of Chandler's Ford and easy access can be gained onto the M3 & M27 motorways.

ACCOMMODATION

Ground Floor

Entrance Hall:

Access to each room and stairs to first floor.

Study:

12'8" max x 7'5" (3.87m max x 2.27m)

Dining Room:

11'1" x 10'1" (3.39m x 3.07m)

Sitting Room:

17'1" x 12'8" (5.20m x 3.87m) French doors onto rear garden.

Cloakroom:

White suite comprising WC and wash basin.

Kitchen:

11'9" x 9'4" (3.57m x 2.85m)

Utility:

9'5" x 6'6" (2.87m x 1.97m)

First Floor

Landing:

Access to loft space.

Bedroom 1:

12'8" x 11'1" (3.87m x 3.87m)

En-Suite:

Suite comprising shower cubicle with glass screen, WC and wash basin with cupboard under.

Bedroom 2:

11'1" x 10'1" (3.38m x 3.08m)

Bedroom 3:

12'8" x 9'6" (3.86m x 2.89m) Built-in wardrobe.

Bedroom 4:

10'1" x 9'7" (3.07m x 2.91m)

Family Bathroom:

Suite comprising bath with shower over, WC, wash basin and built-in airing cupboard.

OUTSIDE

Front:

Brick paved driveway with parking for multiple vehicles.

Rear Garden:

South facing, decking area with additional raised decking seating space, artificial grass and side access on either side of the property. Measuring approx. 37 ft x 36 ft

Home Office:

16'10" x 16'8" (5.13m x 5.08m) Detached building providing extra office space or could be used as a games room.

OTHER INFORMATION

Tenure:

Freehold

Approximate Age:

1985

Approximate Area:

1670 sq ft / 155 sq m (including home office)

Sellers Position:

No forward chain

Heating:

Gas central heating

Windows:

UPVC double glazing

Loft Space:

Infant/Junior School:

Nightingale Primary School

Secondary School:

Crestwood Community School

Local Council:

Eastleigh Borough Council - 02380 688000

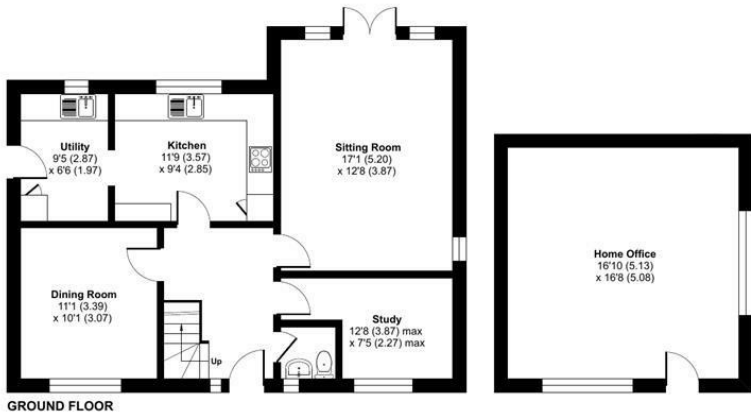
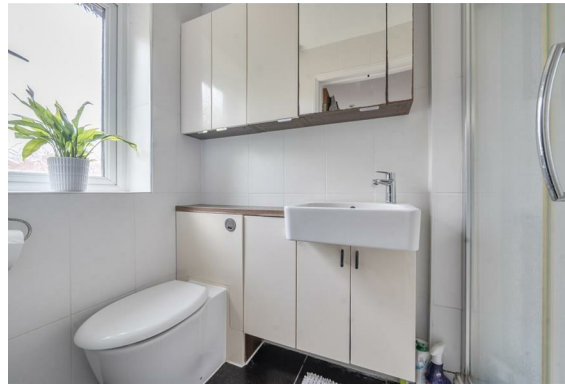
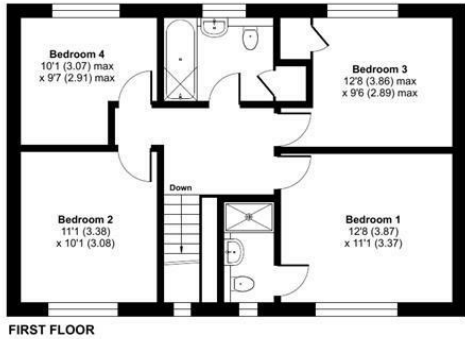
Council Tax:

Band E

Agents Note:

If you have an offer accepted on a property we will need to, by law, conduct Anti Money Laundering Checks. There is a charge of £60 including vat for these checks regardless of the number of buyers involved.

Ground Floor = 720 sq ft / 66.8 sq m
 First Floor = 670 sq ft / 62.2 sq m
 Home Office = 280 sq ft / 26 sq m
 Total = 1670 sq ft / 155 sq m
 For identification only - Not to scale



Energy Efficiency Rating		Current	Potential
Very energy efficient - lower running costs			
(92 plus) A			
(81-91) B			
(69-80) C		75	80
(55-68) D			
(39-54) E			
(21-38) F			
(1-20) G			
Not energy efficient - higher running costs			
England & Wales		EU Directive 2002/91/EC	

Floor plan produced in accordance with RICS Property Measurement 2nd Edition, Incorporating International Property Measurement Standards (IPMS2 Residential). © ritchicom 2026. Produced for Sparks Ellison. REF: 1478666

94 Winchester Road, Chandler's Ford, Hampshire, SO53 2GJ

Sales: t: 02380 255333 e: property@sparksellison.co.uk
 Lettings: t: 02380 018518 e: lettings@sparksellison.co.uk

While we endeavour to make our sales particulars fair, accurate and reliable, they are only a general guide to the property and, accordingly, if there is any point which is of particular importance to you please contact the office and we will be pleased to check it for you, especially if you are contemplating travelling some distance to view the property. These approximate room sizes are only intended as general guidance. You must verify the dimensions carefully before ordering carpets or any built in furniture. Please note we have not tested the services or any of the equipment or appliances in this property, accordingly we strongly advise prospective buyers to commission their own survey or service report before finalising their offer to purchase. These particulars are issued in good faith but do not constitute representations of fact or form part of any offer or contract. The matters referred to in these particulars should be independently verified by prospective buyers or tenants. Neither Sparks Ellison nor any of its employees or agents has any authority to make or give any representation or warranty whatever in relation to this property. Your home is at risk if you do not keep up repayments on a mortgage or other loan secured on it. Written quotations available on request. All loans secured on property. Life assurance usually required.



